

IMPULSE GENERATOR

PERFORMANCE CHECK

Model:

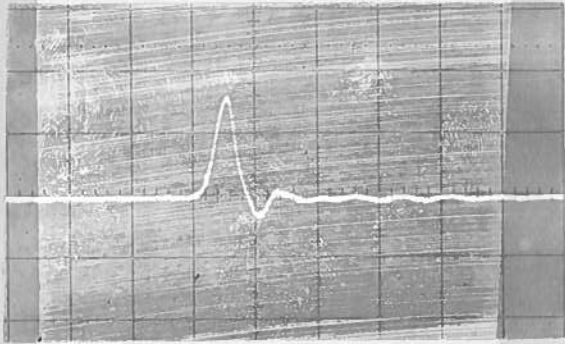
AVH-E

S.N.:

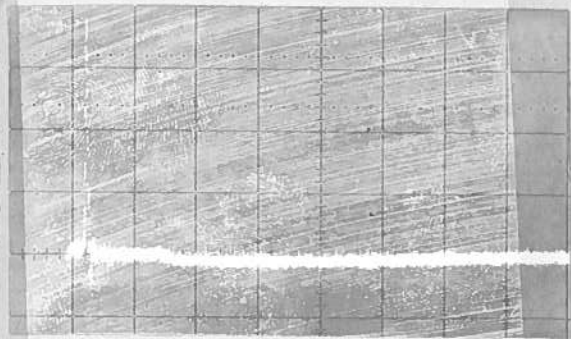
831

Date:

APRIL 12 82



1 NSEC/DIV
50 VOLTS/DIV
100 KHZ



20 VOLTS/DIV
5 NSEC/DIV
100 KHZ

a) Output signal amplitude:

$\geq +80V$

b) Pulse width:

$\leq 0.8 NSEC$

c) Jitter, stability:

OK

d) Prime power:

+15V TO +24V

65 mA.

* JITTER HIGH
AT TEMP
BELOW 0°C.