

PULSE GENERATOR
PERFORMANCE CHECK

Model: *AVR-1-C-VMSU1*

S.N.: *1734*

Date: *MAR 22 84*

*SEE
PHOTOS ON
FOLLOWING
PAGE*

- a) Output signal amplitude:
0 TO +200V
- b) Pulse width:
0.1 TO 2.0 USEC
- c) Rise time:
LS NSEC
- d) Fall time:
LS NSEC
- e) PRF:
0 TO 10 KHZ
- f) Jitter, stability:
OK
- g) Prime power:

*110/220V
50-60HZ*



NO CABLE,
MOUNT DIRECTLY
ON P6 OUT.

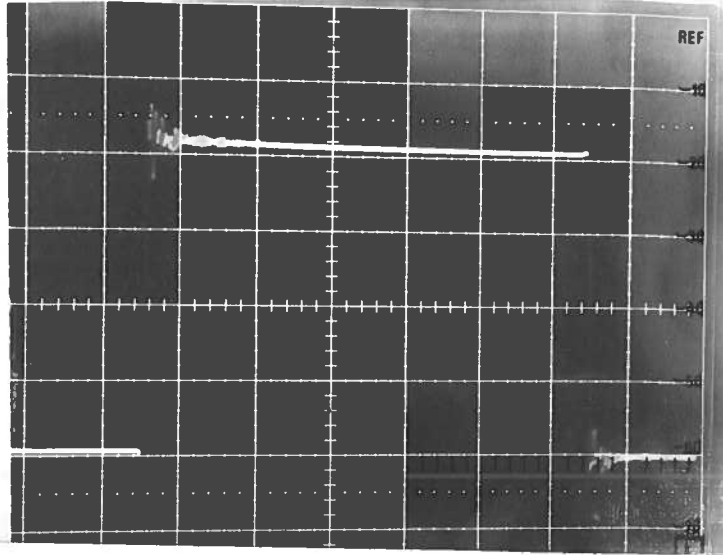
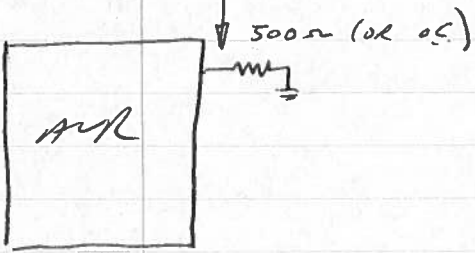
AVR-1-C-MS41

LOAD TESTS

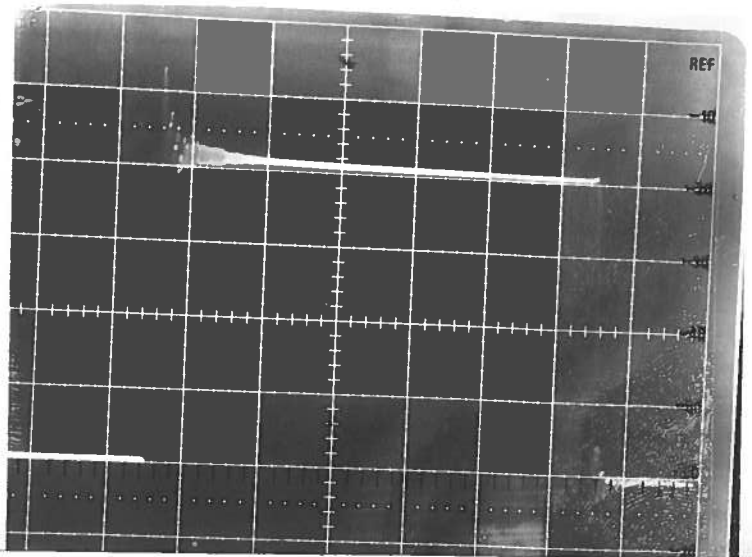
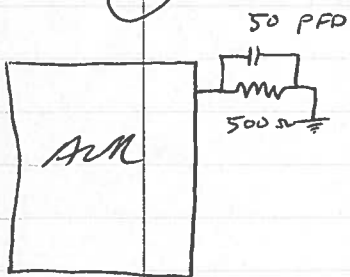
50 V/DIV

200 NS/2 DIV

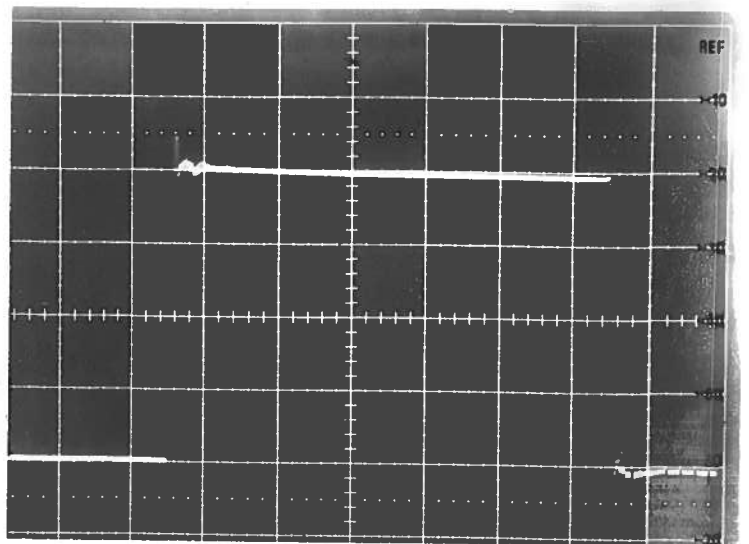
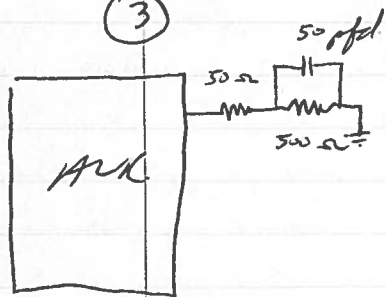
①



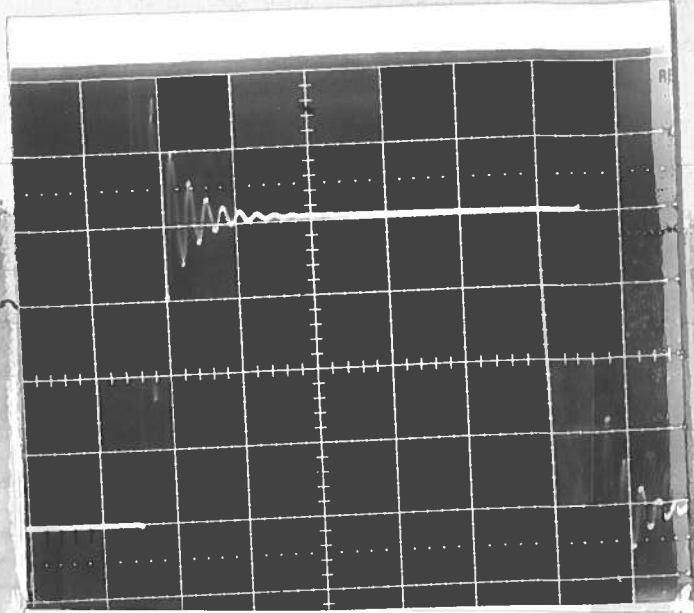
②



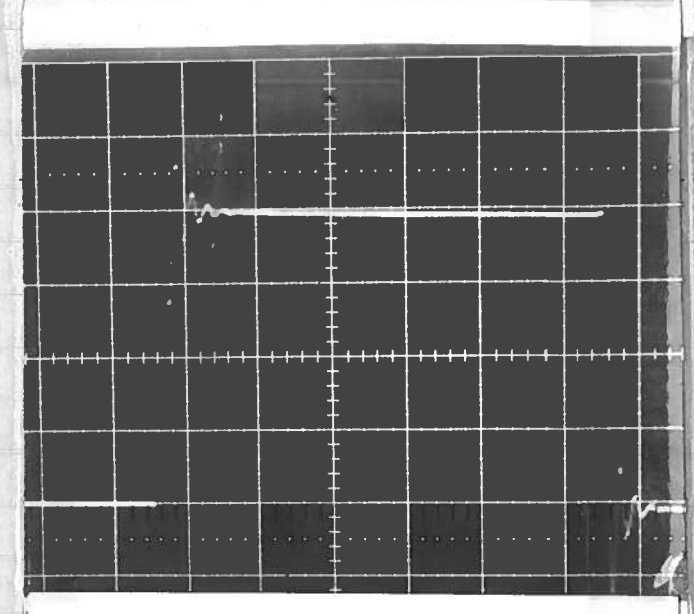
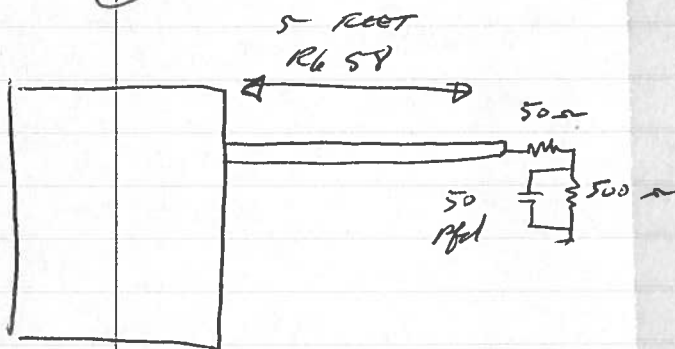
③



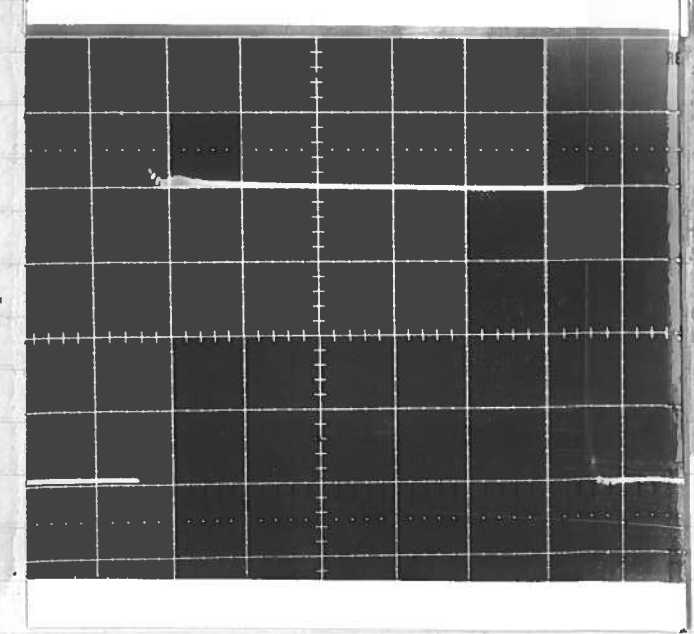
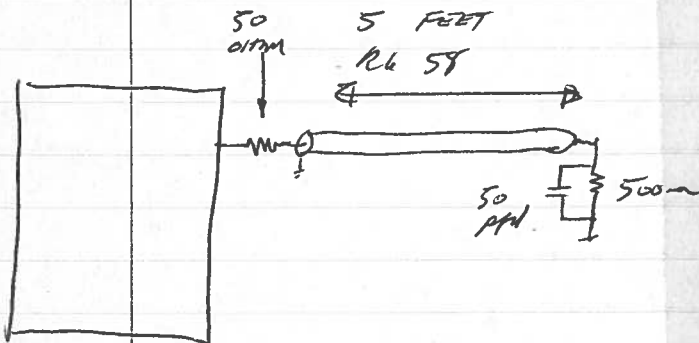
(4)



(5)



(6)



CONC

- ① IF SIGNIFICANT CAPACITANCE & LOAD
CAPACITANCE PRESENT, USE
50 OHM SERIES RESISTANCE AT
PG OUT TO DAMPEN
OSCILLATIONS & OVERTSHOT. NOTE
THAT 50 OHM SERIES RESISTANCE
WILL DAMPEN RISE TIME ALSO
AND WILL POSSIBLY REDUCE
PEAK PULSE OUTPUT RELATED TO
 V_{REF} . IF SO, USE HIGH
RESISTANCE VOLTAGE DIVIDER TO
REDUCE V_{REF} .