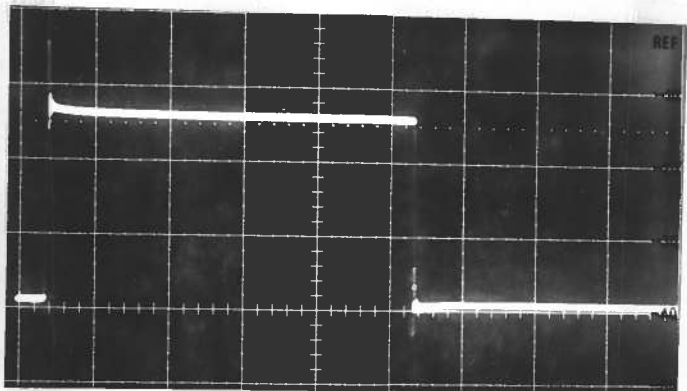


PULSE GENERATOR
PERFORMANCE CHECK

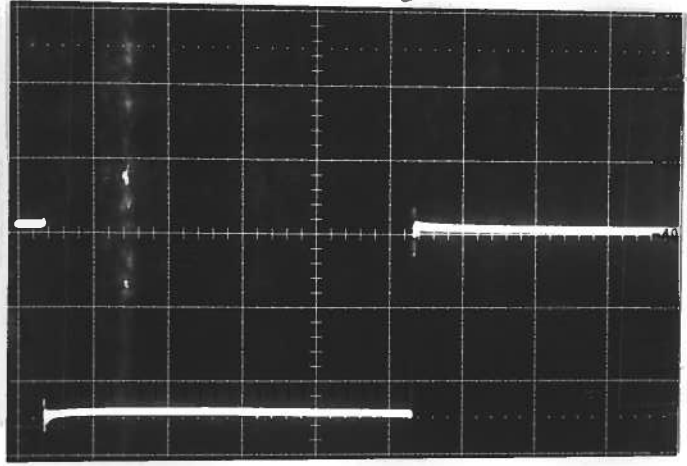
Model: *AVR-B1-C-W-DN-M2*

S.N.: *2903*

Date: *MAR 17 '86*



*P_{out}: 10 VOLTS/DIV
1.0 USEC/DIV
30 KHz
R_L = 50 Ω*



*N_{out}: 10 VOLTS/DIV
1.0 USEC/DIV
30 KHz
R_L = 50 Ω*

- a) Output signal amplitude:
 - A) 0 TO ± 25 VOLTS*
 - B) 0 TO ± 25 VOLTS*
 - C) 0 TO ± 25 VOLTS*
- b) Pulse width:
 - A) 0.1 TO 500 USEC.*
 - B)*
 - C)*
- c) Rise time:
 - A) < 30 NSEC*
 - B)*
 - C)*
- d) Fall time:
 - A) < 30 NSEC*
 - B)*
 - C)*
- e) PRF:
 - 0 TO 30 KHz*
- f) Jitter, stability:
 - OK*
- g) Prime power:

*120/240 V
50-60 Hz*

[Signature]