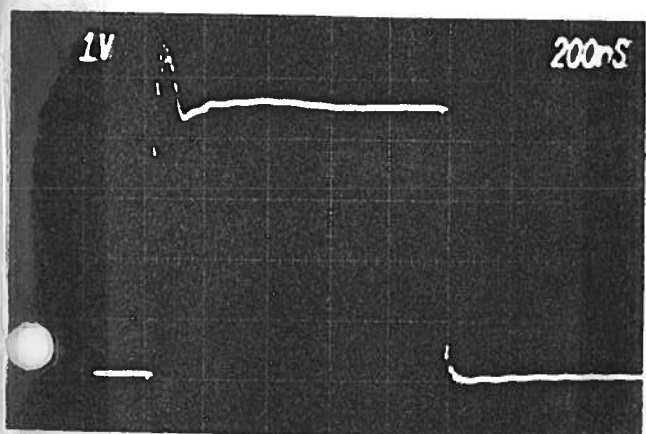


PULSE GENERATOR
PERFORMANCE CHECK

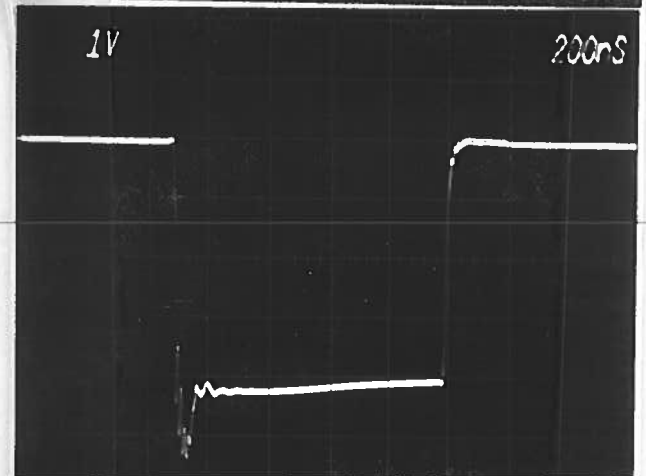
Model: *AV-107-C-M-pw-N3*
 S.N.: *3423*
 Date: *DEC 5 81*



(A)
 P_{out}

$R_L = 3.3 \Omega$
 20 dB ATTE
 10 VOLT/DIV

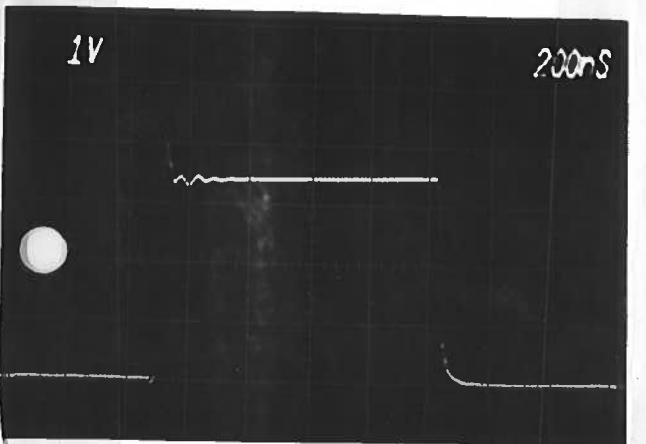
- a) Output signal amplitude:
0 TO ±15 AMP(S)
- b) Pulse width:
50 NSEC TO 1.0 USEC
- c) Rise time:
≤ 10 NSEC
- d) Fall time:
≤ 10 NSEC



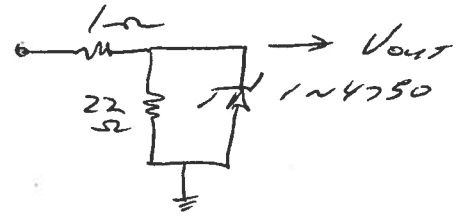
(B)
 AS (A)
 BUT
 NOISE

- e) PRF:
0 TO 10 KHz
- f) Jitter, stability:
OK

g) Prime power:
120/240 V
50-60 Hz.



(C) P_{out} , ZENER
 DIODE LOAD



[Signature]