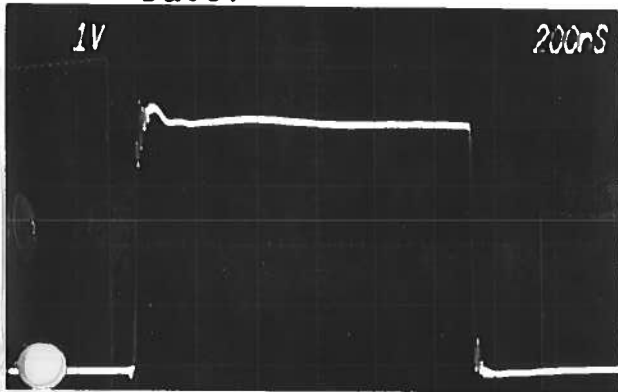


PULSE GENERATOR  
PERFORMANCE CHECK

Model: *AV 707 - C - M - PN - N3*

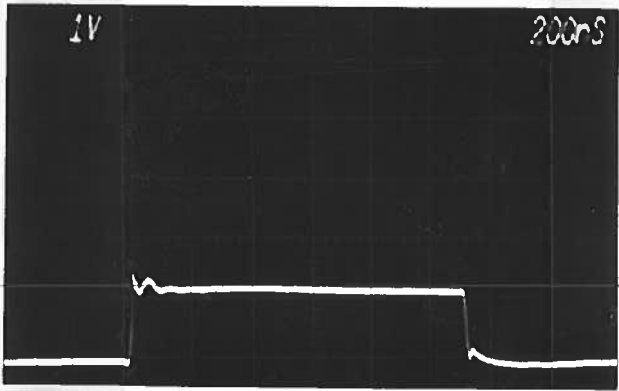
S.N.: *3424*

Date: *DEC 5 86*



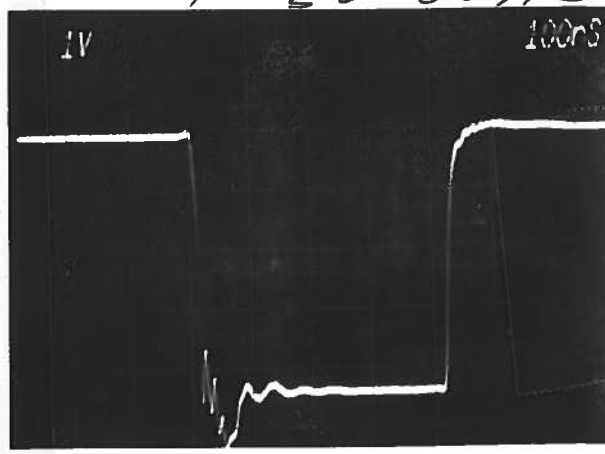
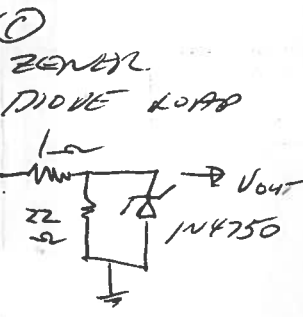
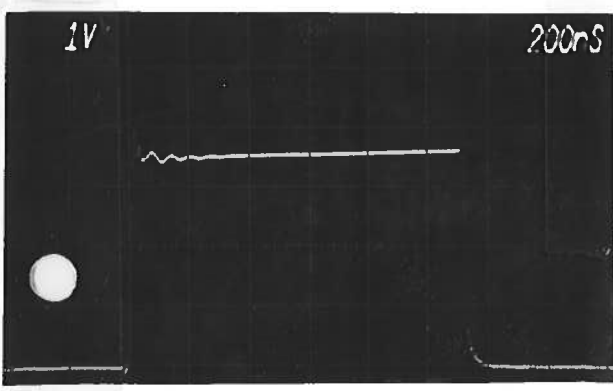
Ⓐ  
Part  
 $R_L = 33 \Omega$   
20 dB ATTEN  
(10 VOLTS/DIV)

- a) Output signal amplitude: *0 TO  $\pm 15$  VAMPS*
- b) Pulse width: *50 nSEC TO 1.0  $\mu$ SEC*
- c) Rise time:  *$\leq 10$  nSEC*
- d) Fall time:  *$\leq 10$  nSEC*
- e) PRF: *0 TO 10 KHz*
- f) Jitter, stability:



Ⓑ AS Ⓐ  
BUT  
 $R_L = 0.6 \Omega$

- g) Prime power: *OK*  
*120/240 V*  
*50-60 Hz*



Ⓓ  
N OUT.  
 $R_L = 33 \Omega$