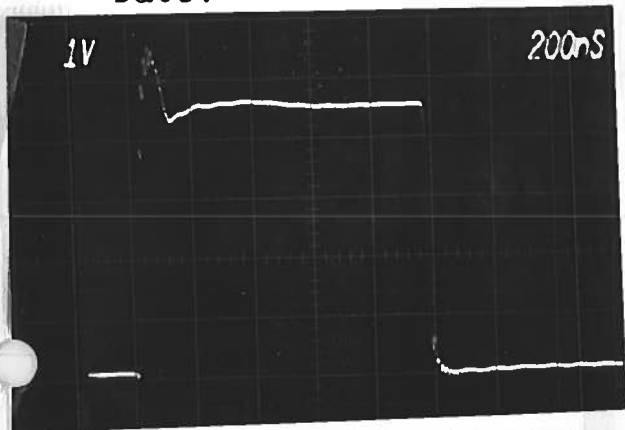


PULSE GENERATOR
PERFORMANCE CHECK

Model: *AV-107C-M-PN-N3*

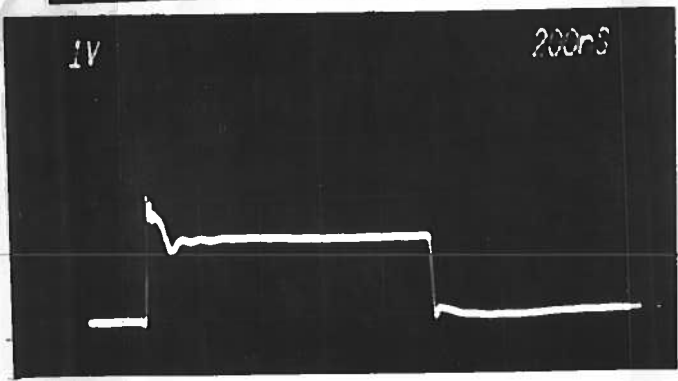
S.N.: *3567*

Date: *DEC 5 '86*



(A)

- P_{out} a) Output signal amplitude:
0 TO ± 15 AMPS
- $R_L = 3.3 \Omega$ b) Pulse width:
50 NSEC TO 1.0 USEC
- 20 db MIN* c) Rise time:
≤ 10 NSEC
- (10 VOLTS/DIV)* d) Fall time:
≤ 10 NSEC
- e) PRF:
0 TO 10 KHZ
- $R_L = 0.6 \Omega$ f) Jitter, stability:
OK

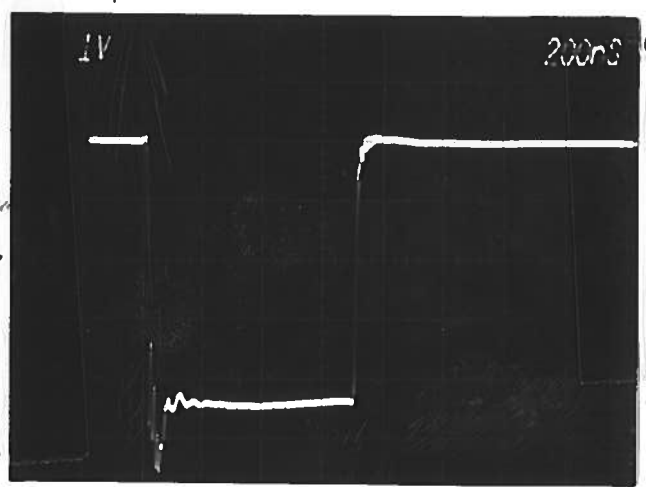
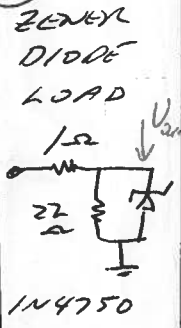


(B)

AS (A) BUT



(C)



(D)

N
out
 $R_L = 3 \Omega$

[Signature]