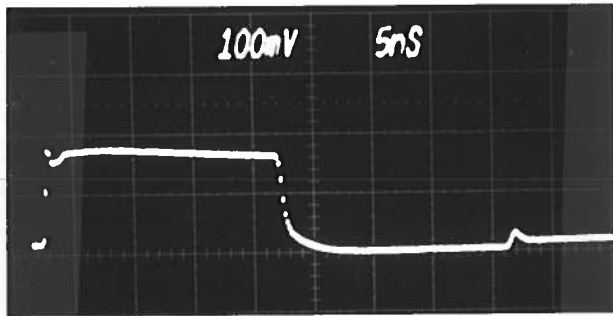
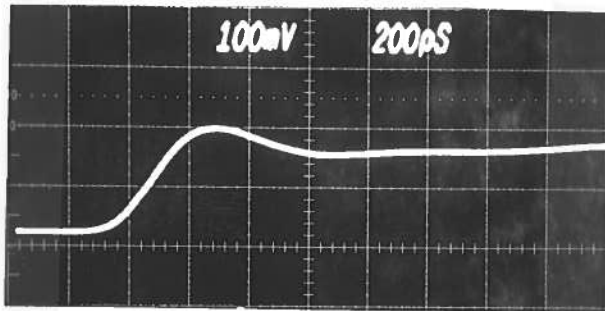


PULSE GENERATOR
PERFORMANCE CHECK

Model: *AVI-MPT*
 S.N.: *3989*
 Date: *NOV 26 87*



Ⓐ 50 dB ATTEN
 ∴ 32 VOLTS DIV
 20 KHZ



Ⓑ AS Ⓐ BUT
 200 PSEC / DIV
 (RISE TIME)

- a) Output signal amplitude:
 $\geq +40$ VOLTS.
- b) Pulse width:
 2 TO 100 NSEC.
- c) Rise time:
 (SEE FIG 1)
 ≤ 350 PSEC.
- d) Fall time:
 ≤ 2 NSEC.
- e) PRF:
 PW MIN: 0 TO 1 MHz
 PW MAX: 0 TO 20 KHz.
- f) Jitter, stability:
 OK
- g) Prime power:
 $+15 \pm 1.0$ VOLTS
 250 mA MAX.