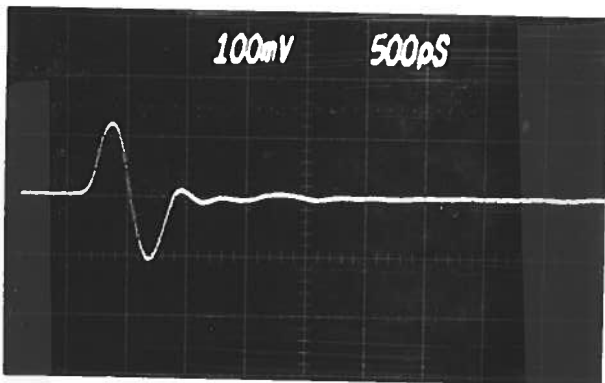


PERFORMANCE CHECK

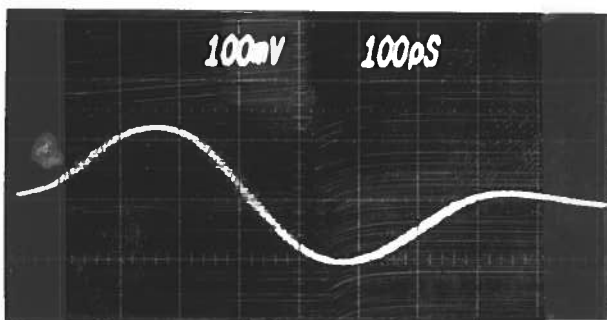
Model: ARD-1300

S.N.: 4524

Date: SEPT 6 1988



① 40 dB ATTEN
-10 VOLTS/DIV
500 kHz pF



② 100 psec BUT
100 psec/DIV

a) Output signal amplitude, V_{pp} :

~ 20 VOLTS

b) Spurious signals WRT peak:

± 26 dB

c) Waveforms:

1300 MHz

d) Prime power:

+15 ± 1.0 VOLT

e) Tuning range:

200 MHz (MAX)
100 MHz

f) Symmetry:

OK

g) Stability:

OK

h) INPUT TRIGGER

TTL