

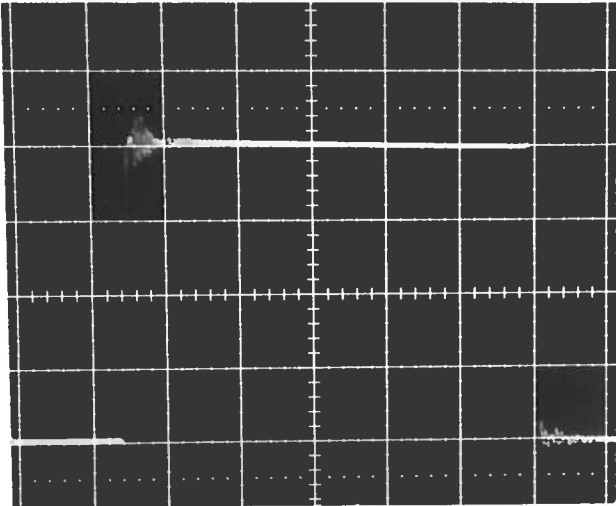
PULSE GENERATOR

PERFORMANCE CHECK

Model: AVR-1PW-C-P-CA

S.N.: 5589

Date: SEPT 20 1990



- a) Output signal amplitude: 0 TO +200 V
- b) Pulse width: TO 50 μ s
- c) Rise time: 0.1 TO 5.0 μ s
- d) Fall time: \leq 10 NS
- e) PRF: \leq 10 NS
- f) Jitter, stability: OK
- g) Prime power: 120 / 240 V

$R_c = 50 \Omega$

50 VOLTS / DIV

200 NS / DIV

PRF \approx 1.0 KHz

50-60 Hz