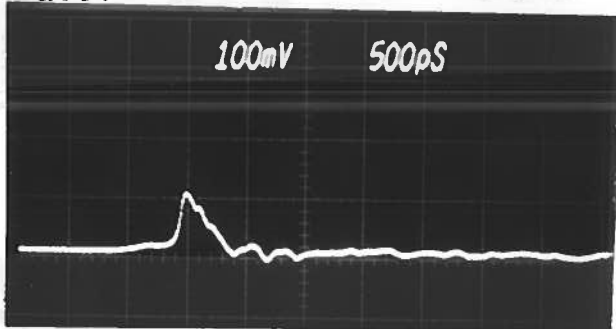


PULSE GENERATOR
PERFORMANCE CHECK

Model: *AVS-100B-GSSA*

S.N.: *5693*

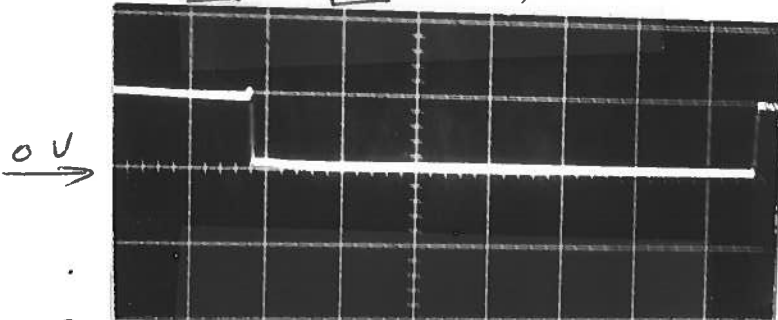
Date: *DEC 5 1990*



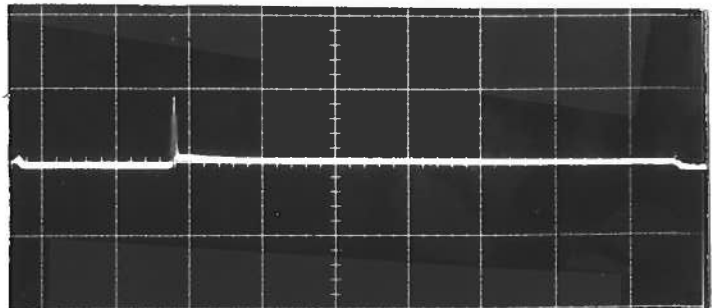
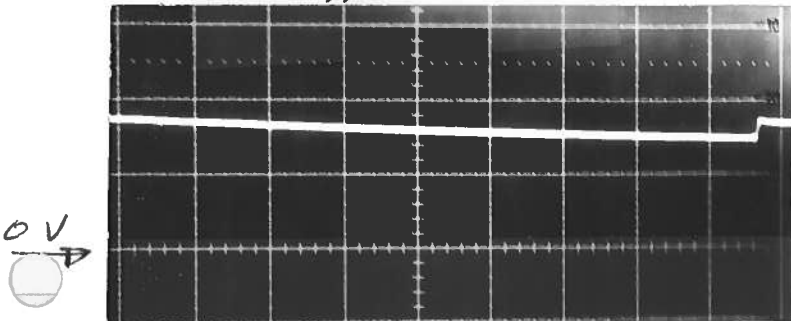
- a) Output signal amplitude:
- b) Pulse width:
- c) Rise time:
- d) Fall time:
- e) PRF:
- f) Jitter, stability:
- g) Prime power:

MONITOR OUT TO 20 dB

30% Δ 100 ps.



*PULSE OUTPUT FOR +10 VOLT IN
2.0 μ SEC/DIV. PRF = 50 KHz
1.0 VOLT/DIV.*



AS ② BUT ON-OFF SWITCH IN OFF POSITION & 2.0 μ SEC/DIV.

AS ② BUT $V_{IN} = 0$ VOLTS.