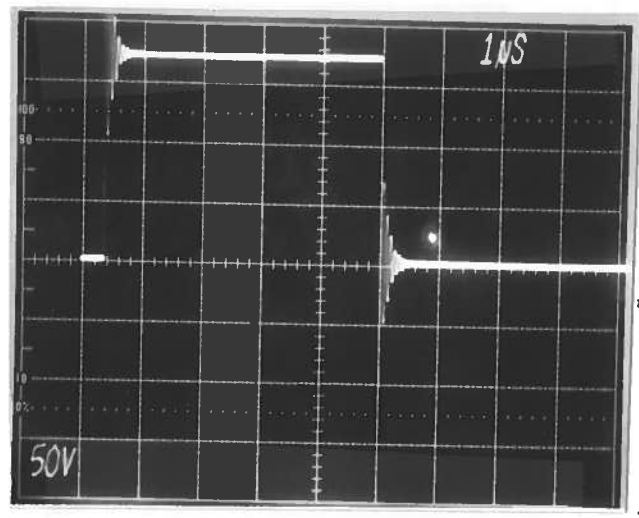


PULSE GENERATOR
PERFORMANCE CHECK

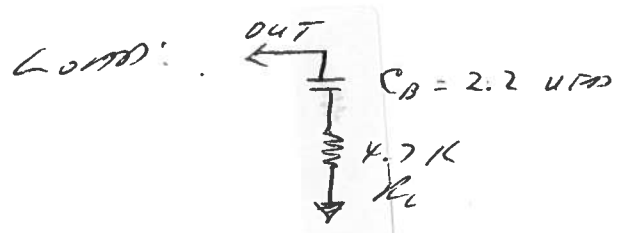
Model: *AVR-4A-C-M1-P*

S.N.: *5766*

Date: *APRIL 18 1991*



- 175 VOLT PULSE*
- a) Output signal amplitude: *0 TO +400 VOLTS*
 - b) Pulse width: *1 TO 5 US*
 - c) Rise time: *(10% MAX DUTY CYCLE) 4 NS*
 - d) Fall time: *15 NS*
 - e) PRF: *0 TO 100 KHZ*
 - f) Jitter, stability: *(10% MAX DUTY CYCLE) 0%*
 - g) Prime power: *120/240V 50-60HZ*



NOTE KINKING REDUCED BY REDUCING R_L AND BY USING INTERNAL SCOPE.

[Signature]

h) DC OFFSET RANGING: *0 TO +200 VOLTS*