

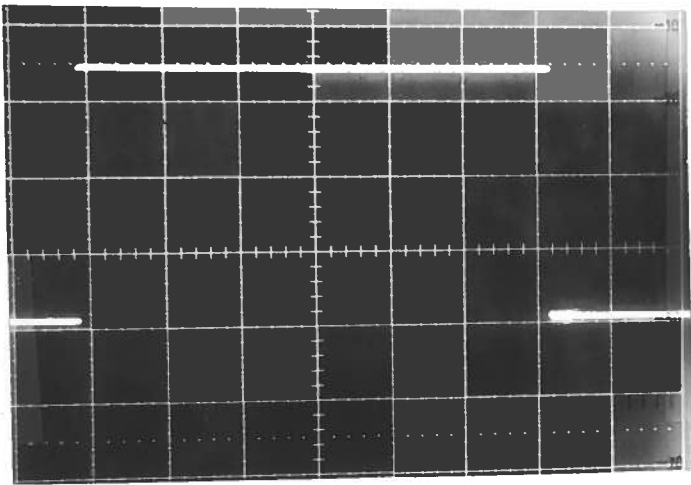
PULSE GENERATOR

PERFORMANCE CHECK

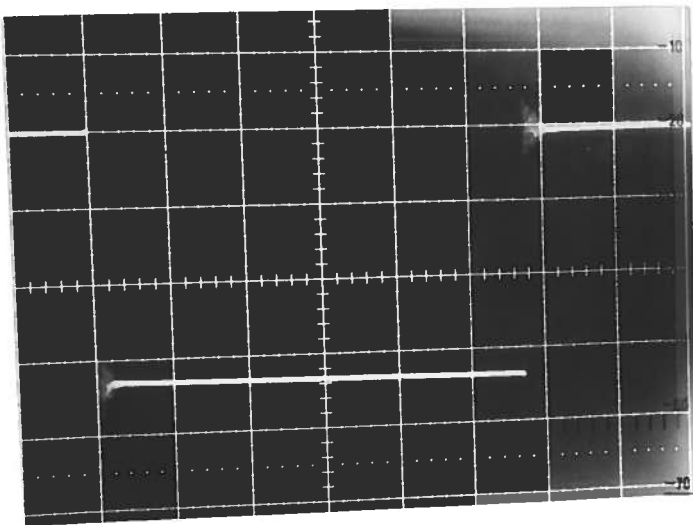
Model: AVR-G1-C-PN-AT-CU1

S.N.: 5860

Date: MAY 9 1991



T_{out} 50 VOLTS/DIV, 20 MS/DIV
 $R_L = 10K.$



N_{out} 50 VOLTS/DIV, 0.5 μ S/DIV
 $R_L = 10K$

- a) Output signal amplitude:
0 TO ± 160 VOLTS
- b) Pulse width: $R_L \geq 10K$
0.1 μ S TO 1.0 SEC
- c) Rise time:
 $\leq 20NS$
- d) Fall time:
 $\leq 20NS$
- e) PRF:
0.1 Hz TO 1 KHz
- f) Jitter, stability:
OK
- g) Prime power:
120/240 V
50-60 Hz