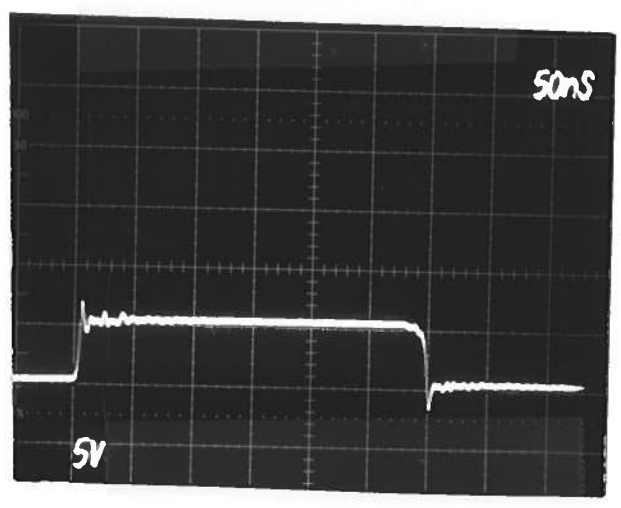


PULSE GENERATOR
PERFORMANCE CHECK

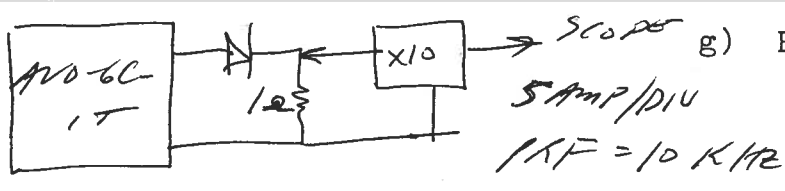
Model: *AVO-6C-C-P-FI-2A-M1**

S.N.: *6805*

Date: *DEC 6 93*



- a) Output signal amplitude:
0 TO +5 AMPS
- b) Pulse width:
*0.095 TO 1.045**
- c) Rise time:
≤ 2 NS
- d) Fall time:
≤ 2 NS
- e) PRF: *0 TO 10.1 KHz**
- f) Jitter, stability: *OK*



- g) Prime power:
120/240 DOWNS
50-60 KHz

**=M1
OPTION*