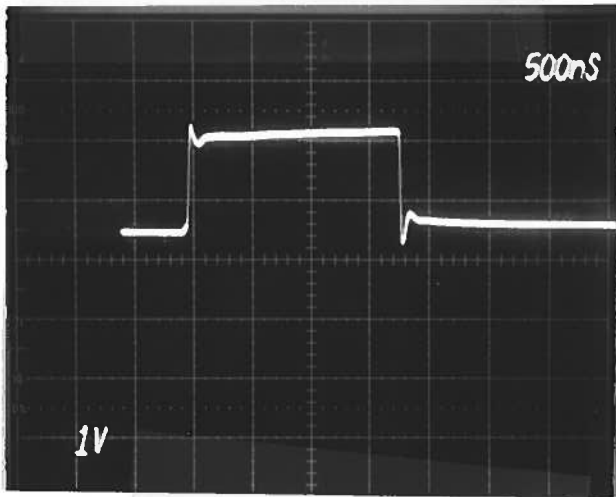


PULSE GENERATOR
PERFORMANCE CHECK

Model: *AV-155C-PN-C*

S.N.: *6913*

Date: *MM 17 16 1994*



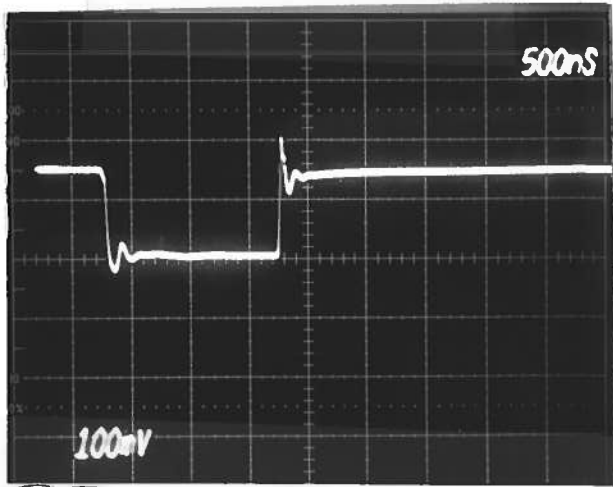
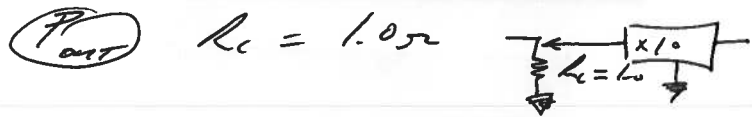
a) Output signal amplitude:
 PULSE: 0 TO ± 2 A
 DC: 0 TO ± 0.5 A
 Pulse width:
 100 NS TO 10 US

c) Rise time:
 ≤ 50 NS
 d) Fall time:
 ≤ 50 NS

e) PRF: 0 TO 10 MHz

f) Jitter, stability:
 OK

g) Prime power:
 $120 / 240$ V
 $50 \cdot 68$ MHz



$\leftarrow 0$ A
 $\leftarrow 0.5$ A DC
 $\leftarrow 1.5$ A PULSE

(N_{out})

[Signature]