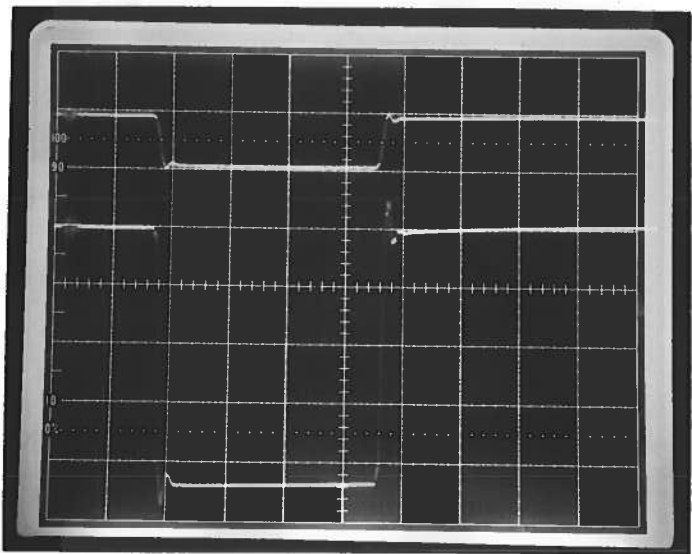


PULSE GENERATOR
PERFORMANCE CHECK

Model: *AVR14-1-PS-N-6502-M-Prot*
-HN-R5

S.N.: *77/8*

Date: *SEPT 15 1996*



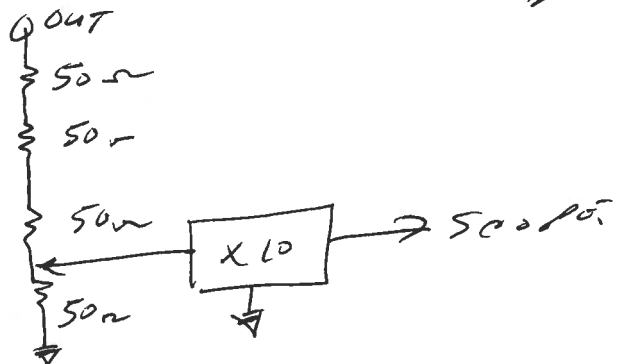
TOP MONITOR OUT TO
50 Ω

BOT LOAD VOLTAGE
≈ 200 V/DIV

500 NS/DIV

PRF = 1 kHz

- a) Output signal amplitude:
0 TO 1000 VOLTS
- b) Pulse width: *($R_L \geq 200 \Omega$)*
0.2 TO 5.0 μS
- c) Rise time:
≤ 50 NS
- d) Fall time:
≤ 50 NS
- e) PRF: *0 TO 1 kHz*
- f) Jitter, stability: *OK*
- g) Prime power: *150/240 V*
50-60 Hz



[Signature]