

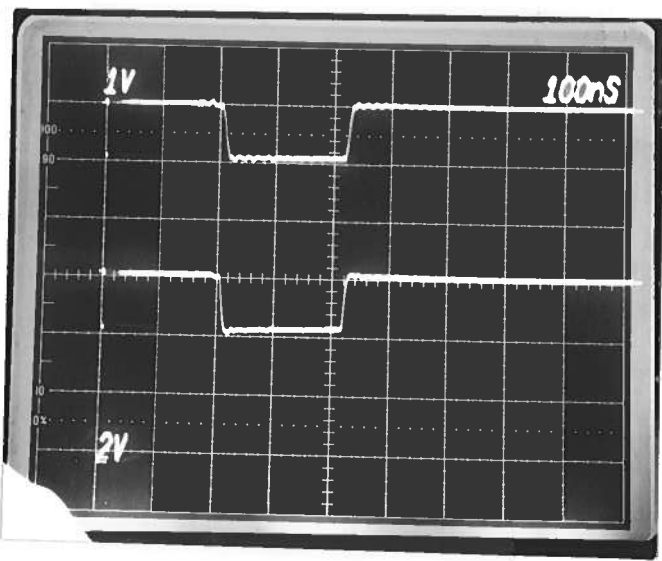
PULSE GENERATOR
PERFORMANCE CHECK

Model: *AV-155A-N*

S.N.: *8544*

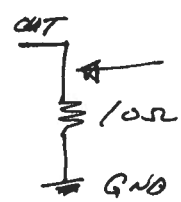
Date: *SEPT 21 1998*

- a) Output signal amplitude:
PULSE: 0 TO -200 mA
OFFSET: 0 TO -200 mA
- b) Pulse width:
20 NS TO 2.0 μS
- c) Rise time: *≤ 10 NS*
- d) Fall time: *≤ 10 NS*
- e) PRF: *0 TO 10 MHz*
- f) Jitter, stability: *OK*
- g) Prime power:
+15 VDC, 300 mA
-15 VDC, 150 mA



TOP MON OUT TO 50 Ω
1V/DIV, 100 NS/DIV

BOT LOAD VOLTAGE, 2V/DIV.
 $R_L = 10 \Omega,$
200 mA.



[Handwritten signature]