

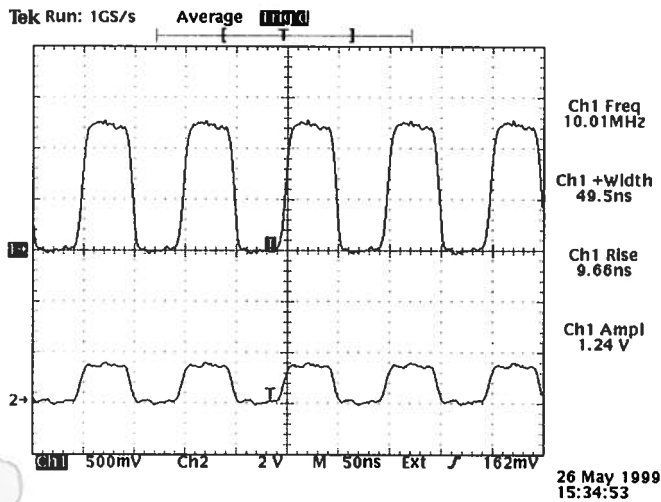
PULSE GENERATOR

PERFORMANCE CHECK

Model: AV-155A-B-P

S.N.: 8941

Date: May 26, 1999



Top: OUT, 0.2A into 6Ω load at end of LZ6 transmission line. 50 ns PW, 10 MHz Internal Trigger mode. 2V/div, 50 ns/div.
Bottom: Monitor output, 10 kΩ load. 1V/div, 1 us/div

a) Output Signal Amplitude: 0 to 200 mA, plus 0 to 200 mA offset ✓

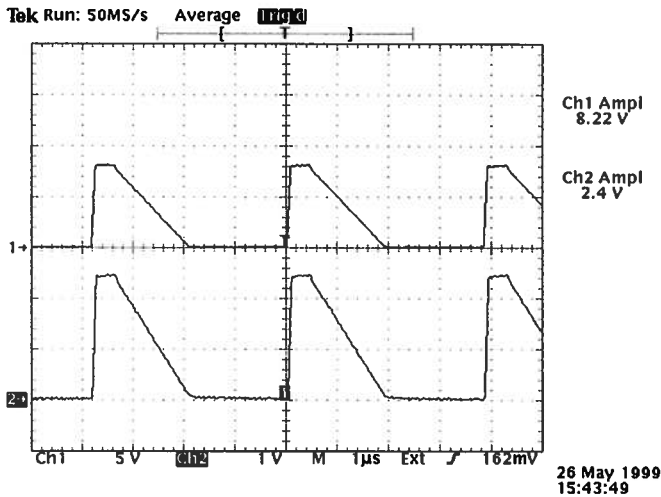
b) Pulse Width: 20 ns – 2 us ✓

c) Rise Time: < 10 ns ✓

d) Fall Time: < 10 ns ✓

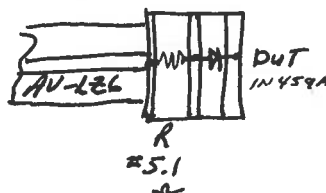
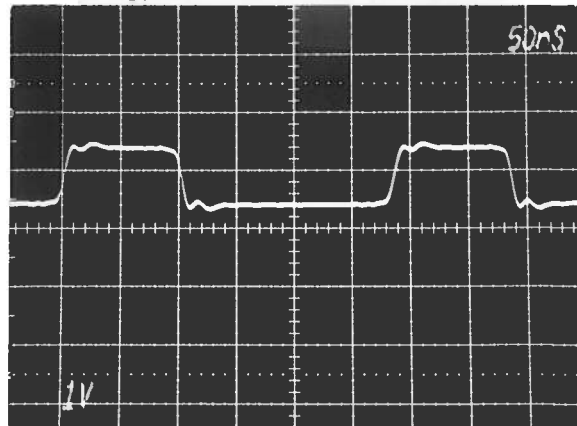
e) PRF: 1 Hz - 10 MHz ✓

f) Jitter, Stability: OK ✓



Top: AMP input, from AV-1000-C pulse generator. EXT AMPLIFY mode. 5 V/div, 1 us/div.
Bottom: OUT, 0.4A into 6Ω load at end of LZ6 transmission line. 1 V/div, 1 us/div

g) Prime Power: 120/240V AC, 50-60 Hz ✓



$I_{DC} = 50 \text{ mA}$
 $I_{PULSE} = 150 \text{ mA}$