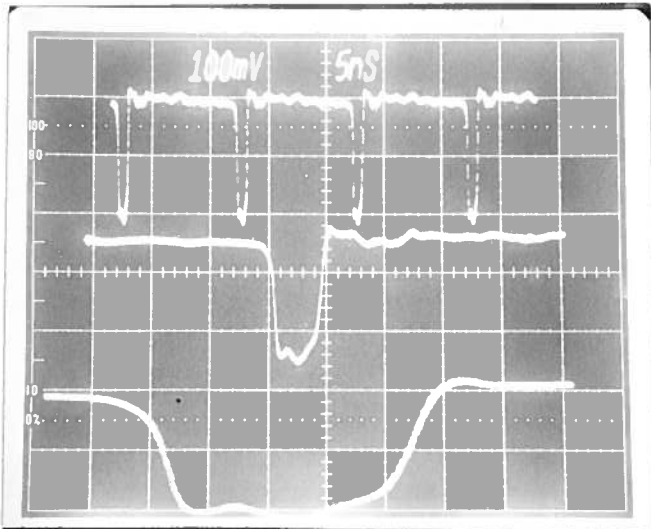


PULSE GENERATOR
PERFORMANCE CHECK

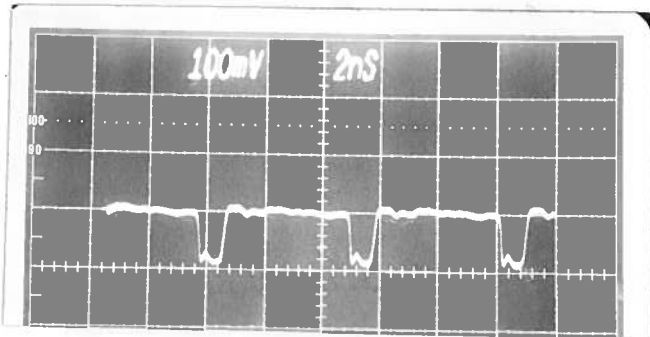
Model: *AVN-4-C-N-ECL-M*

S.N.: *10840*

Date: *FEB 23 2004*



*40dB ATTN. ∴ 10 VOLTS/DIV
TOP: 5NS/DIV (≈ 100 MHz)
MID: AS TOP BUT 1 NS/DIV
BOT: AS TOP BUT 200ps/DIV.*



*10 V/DIV
PRF ≈ 200 MHz.*

- a) Output signal amplitude:
*50-100 MHz: 0 to -20V (to 50Ω)
150 MHz: 0 to -15V (to 50Ω)
250 MHz: 0 to -5V (to 50Ω)*
- b) Pulse width: *0.3 to 1.0 NS*
- c) Rise time: *≤ 150ps*
- d) Fall time: *≤ 150ps*
- e) PRF: *≤ 150ps*
- f) Jitter, stability: *OK*
- g) Prime power: *100-240 VOLTS
50-60 MHz.*

AA