



info@avtechpulse.com
http://www.avtechpulse.com/

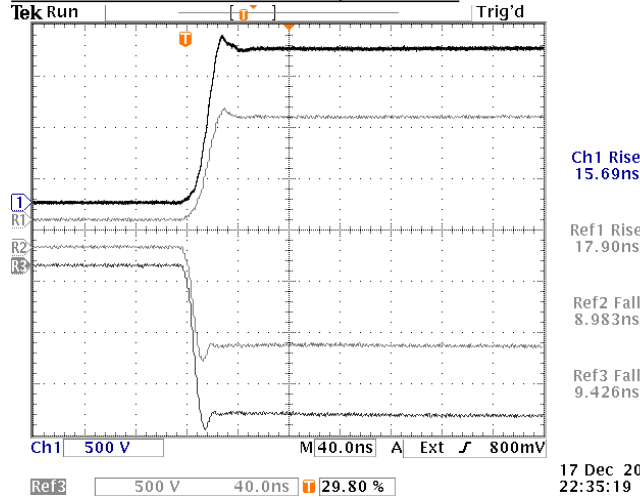
Tel: 888-670-8729 (USA & Canada) or +1-613-686-6675 (Intl)
Fax: 800-561-1970 (USA & Canada) or +1-613-686-6679 (Intl)

BOX 5120, LCD MERIVALE
OTTAWA, CANADA K2C3H5

PERFORMANCE CHECKSHEET

Model: AVRQ-4-B-AHV-FPD-SCHB-V2-AC22-ATA3
Type: Common Mode Transient Immunity (CMTI) Pulser for Opto-Coupler Tests
S.N.: 14057
Date: December 18, 2020

Minimum Rise Time Test, No DUT



+1.5 kV, +1.0 kV, -1.0 kV, and -1.5 kV with minimum rise time setting

a) Output Signal Amplitude: ± 1 kV, ± 1.5 kV

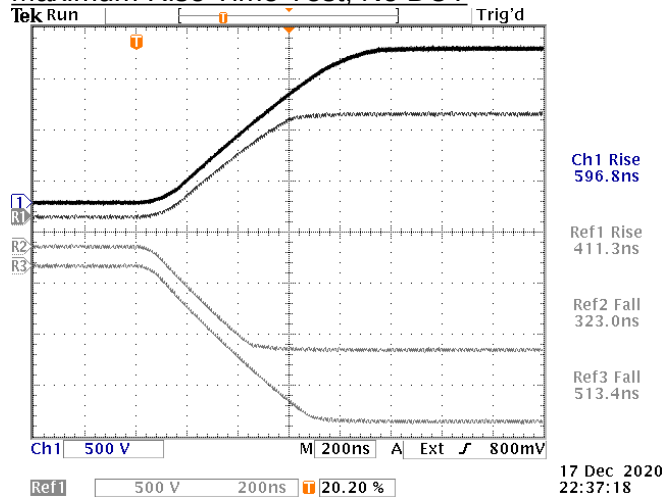
b) Rise Time (10%-90%): < 20 to > 500 ns

c) PRF: 1 Hz - 10 Hz

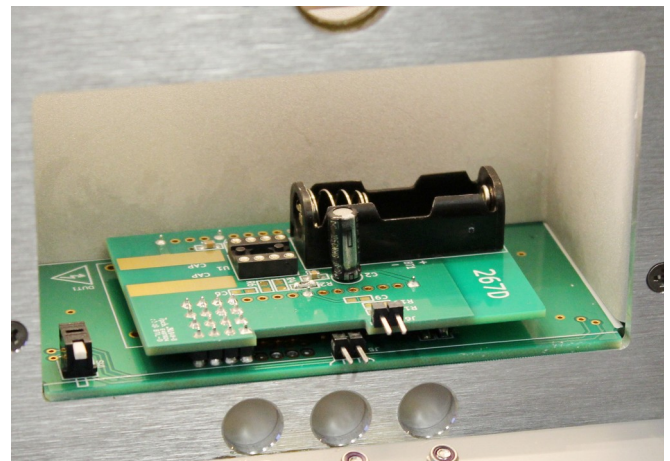
d) Jitter, Stability: OK

e) Prime Power: 100-240V AC, 50-60 Hz.

Maximum Rise Time Test, No DUT

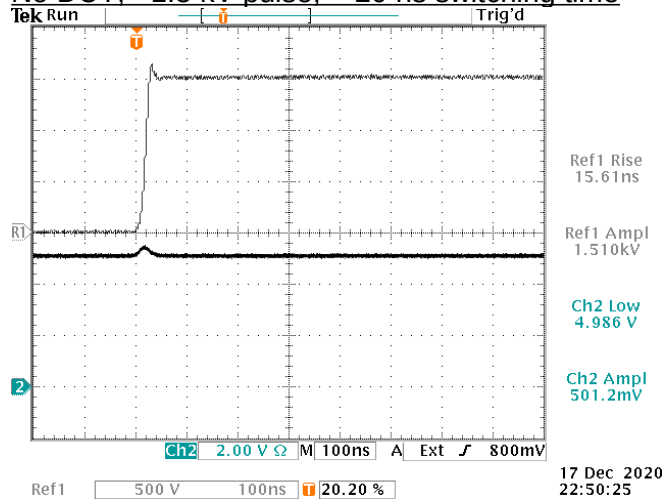


+1.5 kV, +1.0 kV, -1.0 kV, and -1.5 kV with maximum rise time setting

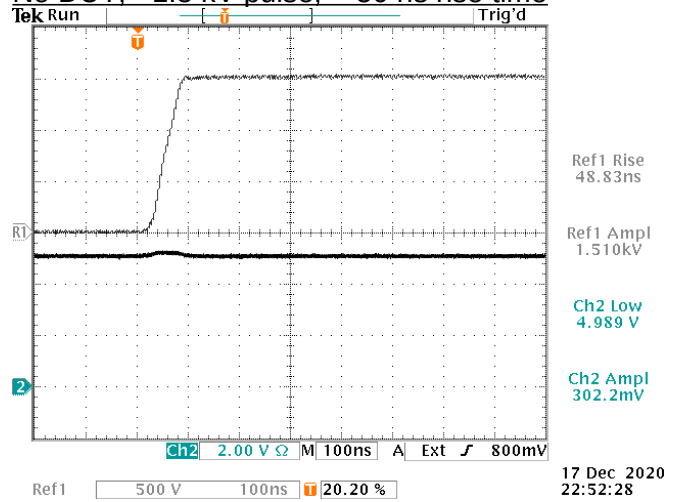


Daughterboard installed
(with no DUT IC)

No DUT, +1.5 kV pulse, < 20 ns switching time

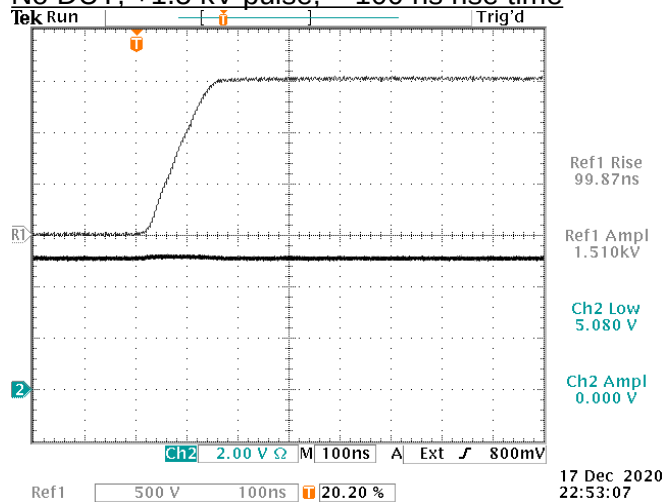


No DUT, +1.5 kV pulse, ~ 50 ns rise time

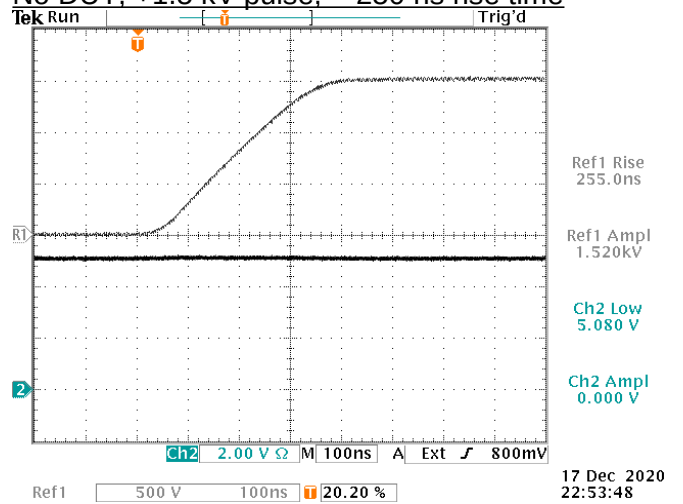


Top = HV out (stored - with signal disconnected before recording logic waveform)
 Bottom = Logic out "A" of a standard PCB 267D daughterboard, VCC2 = +5V, using P6246 probe, and no DUT, R2 = 1 kΩ

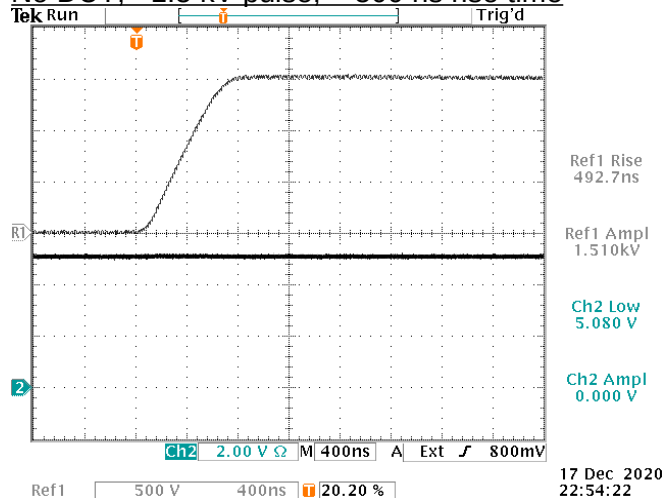
No DUT, +1.5 kV pulse, ~ 100 ns rise time



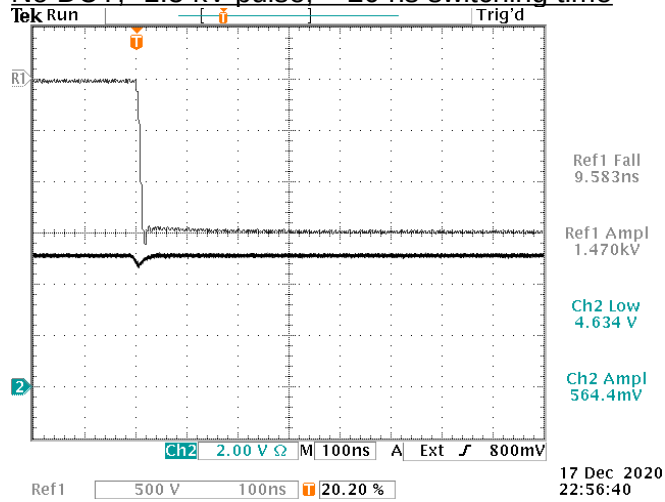
No DUT, +1.5 kV pulse, ~ 250 ns rise time



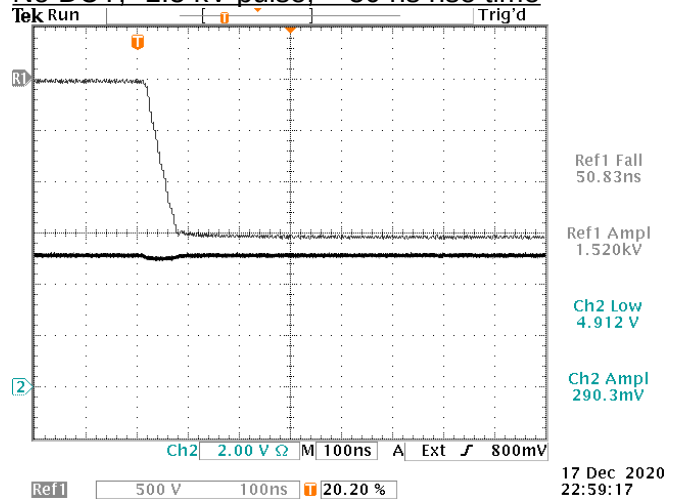
No DUT, +1.5 kV pulse, ~ 500 ns rise time



No DUT, -1.5 kV pulse, < 20 ns switching time

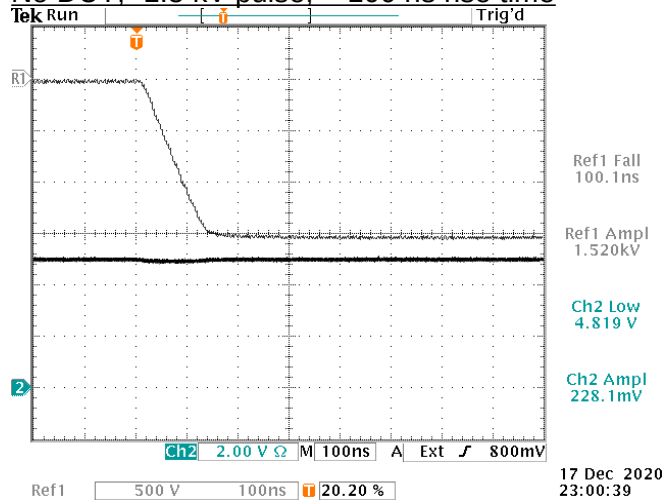


No DUT, -1.5 kV pulse, ~ 50 ns rise time

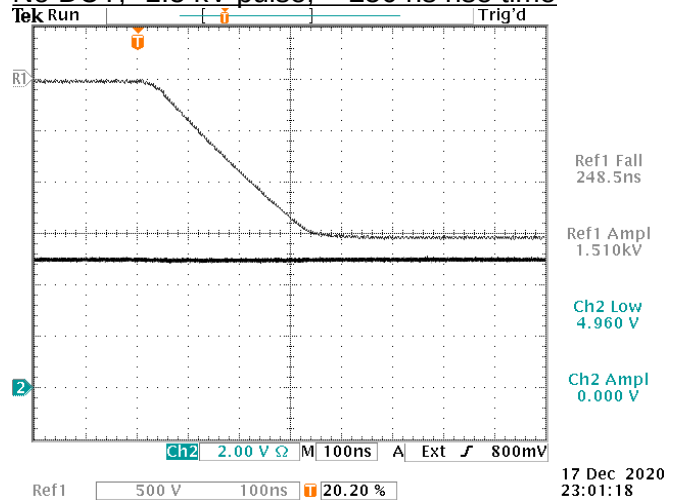


Top = HV out (stored - with signal disconnected before recording logic waveform)
 Bottom = Logic out "A" of a standard PCB 267D daughterboard, VCC2 = +5V, using P6246 probe, and no DUT, R2 = 1 kΩ

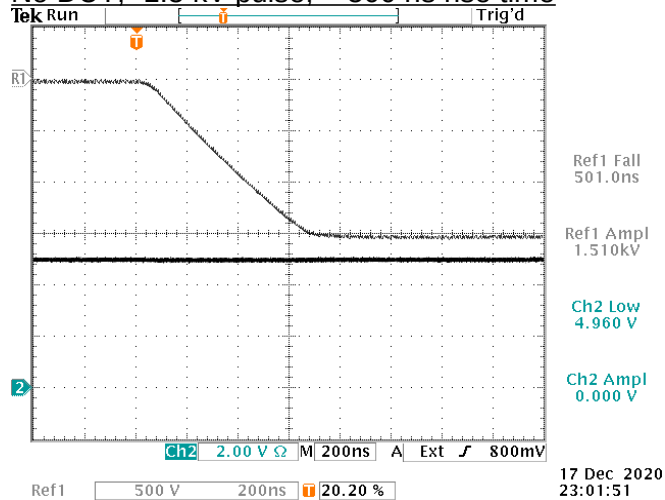
No DUT, -1.5 kV pulse, ~ 100 ns rise time



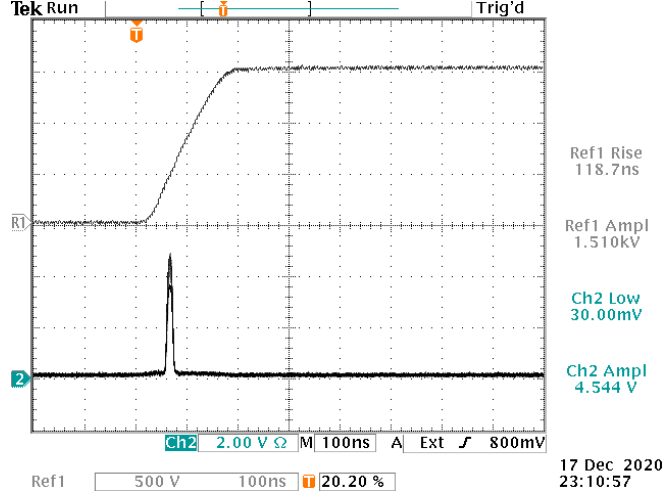
No DUT, -1.5 kV pulse, ~ 250 ns rise time



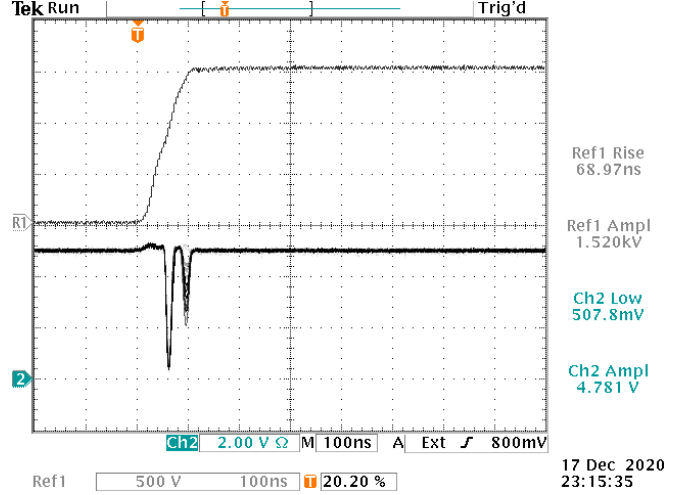
No DUT, -1.5 kV pulse, ~ 500 ns rise time



HCPL-7721, 0V input, +1.5 kV, +5V VCC2

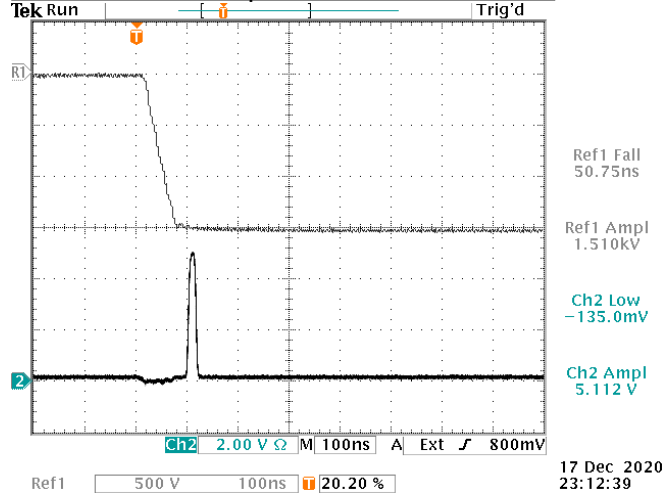


HCPL-7721, +5V input, +1.5 kV, +5V VCC2

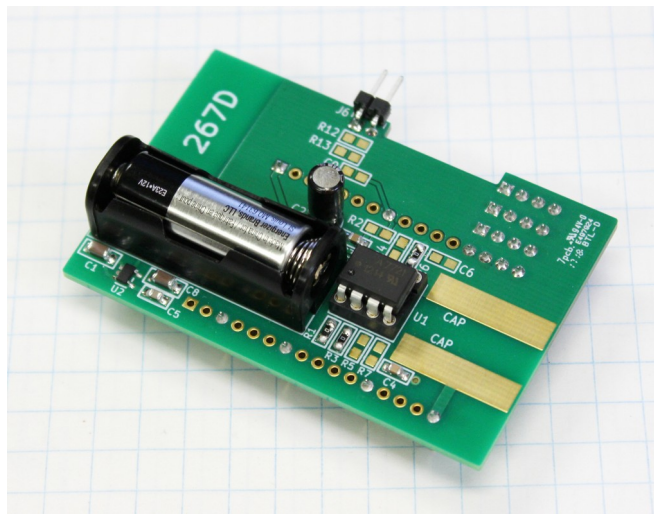
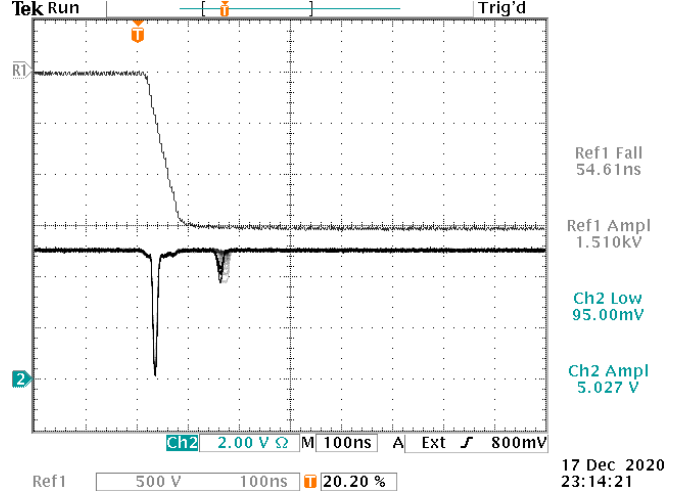


Top = high voltage pulse
 Bottom = Logic output

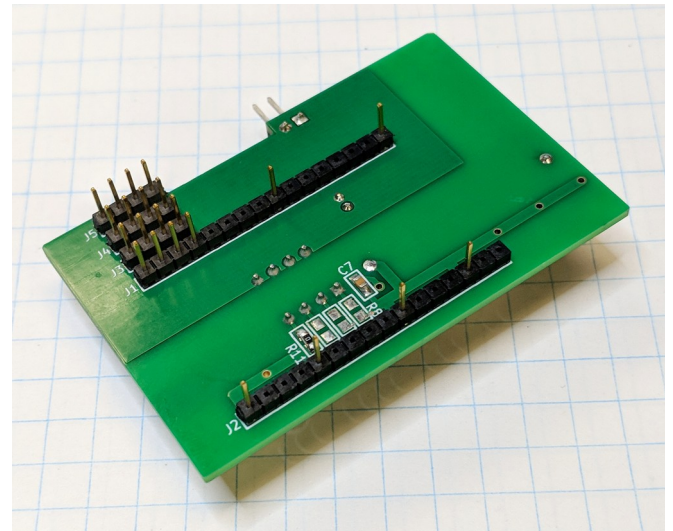
HCPL-7721, 0V input, -1.5 kV, +5V VCC2



HCPL-7721, +5V input, -1.5 kV, +5V VCC2



Top side of daughterboard with HCPL-7721 configured for 5V bias.



Bottom side of daughterboard with HCPL-7721 configured for 5V bias.