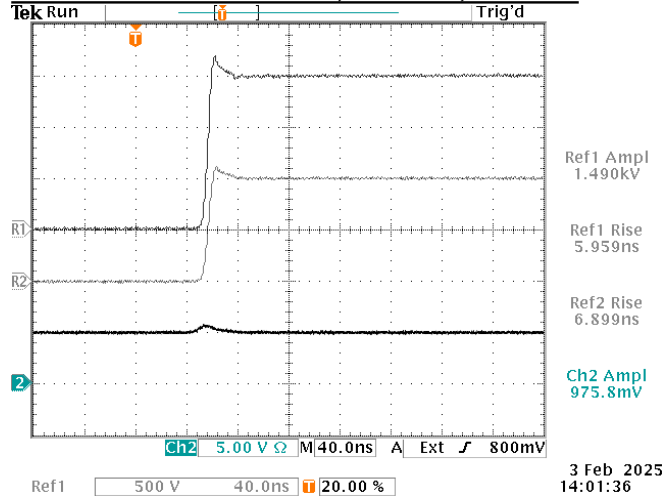


PERFORMANCE CHECKSHEET

Model: AVRQ-5-B-AHV-FPD-ATA3-DIP8  
 Type: Common Mode Transient Immunity (CMTI) Test for Opto-Couplers  
 S.N.: 14498  
 Date: February 3, 2025

Minimum Rise Time Test, No DUT, Positive



a) Output Signal Amplitude:  $\pm 1$  to  $\pm 1.5$  kV

b) Rise Time (10%-90%): < 10 to > 50 ns

c) PRF: 1 Hz - 10 Hz

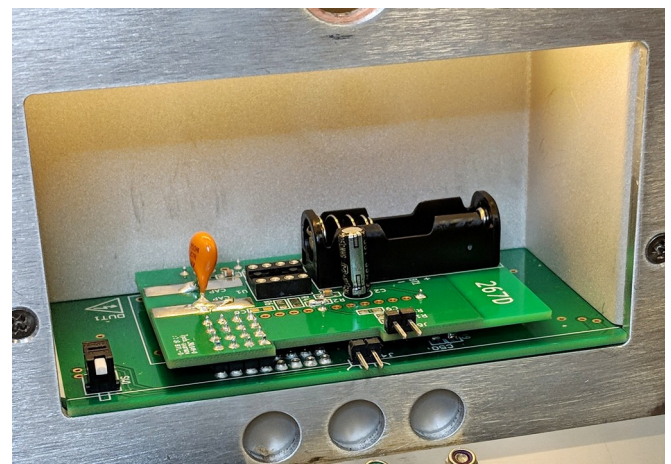
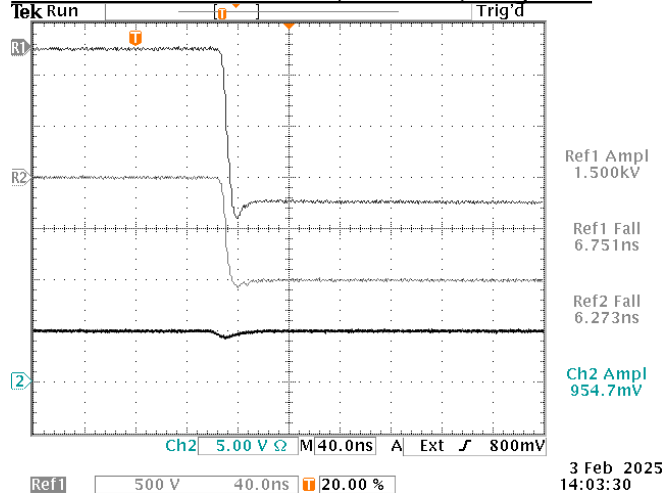
d) Jitter, Stability: OK

e) Prime Power: 100-240V AC, 50-60 Hz.

Top = +1.5 and +1.0 kV HV out (stored - with signal disconnected before recording logic waveform).

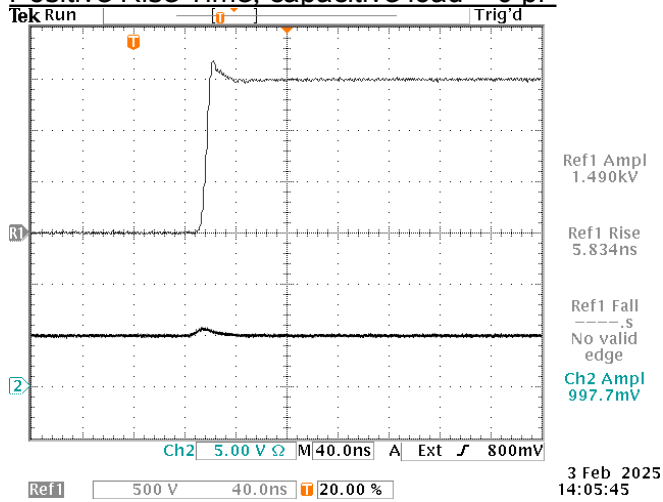
Bottom = Logic "A" out for +1.5 kV, VCC2 = +5V, using P6246, and no DUT, R2 = 1 k $\Omega$ . (This shows the parasitic capacitive coupling onto the Logic "A" out.)

Minimum Rise Time Test, No DUT, Negative

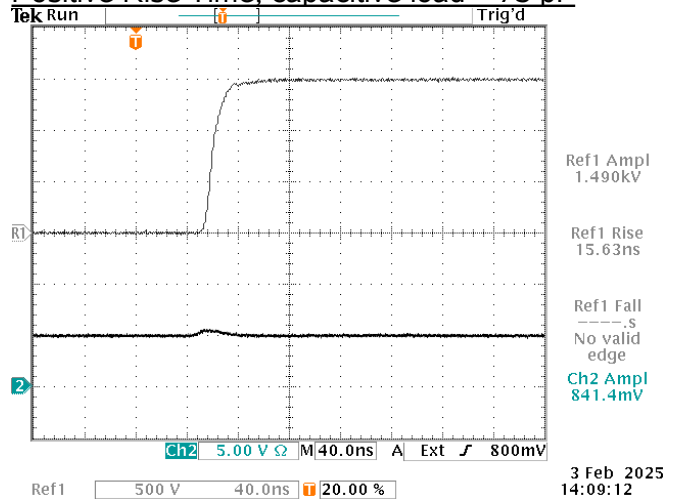


Daughterboard installed in positive position (with no DUT IC)

Positive Rise Time, capacitive load = 0 pF

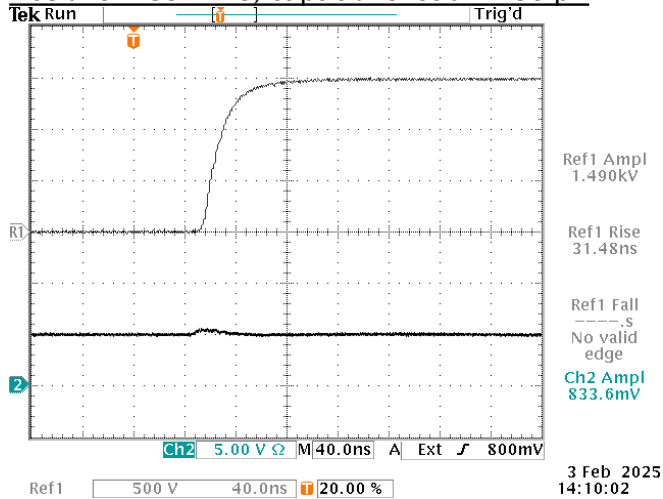


Positive Rise Time, capacitive load = 75 pF

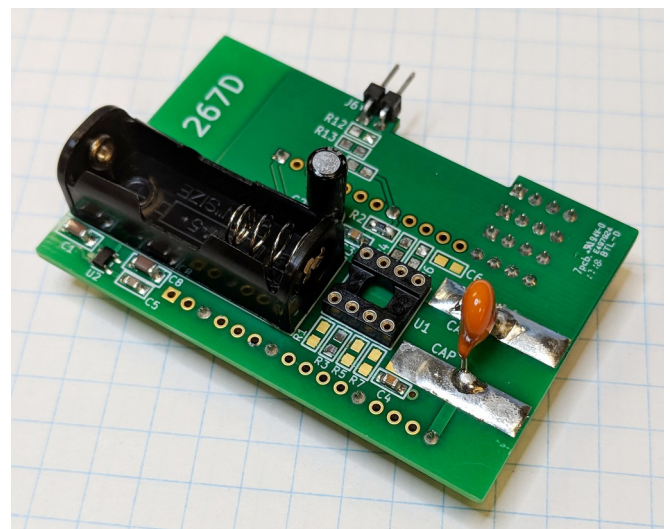
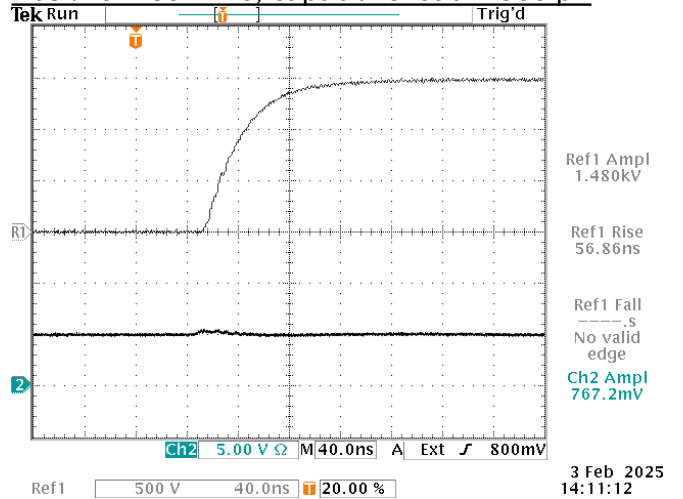


Top = HV out (stored - with signal disconnected before recording logic waveform)  
 Bottom = Logic "A" out, VCC2 = +5V, using P6246 probe, and no DUT, R2 = 1 kΩ

Positive Rise Time, capacitive load = 150 pF

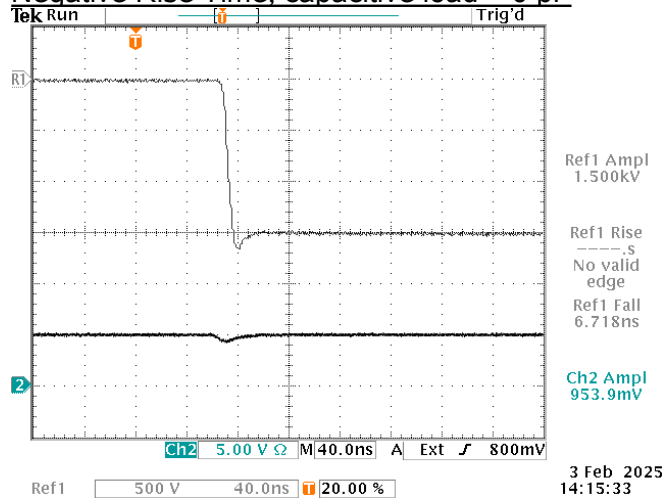


Positive Rise Time, capacitive load = 300 pF

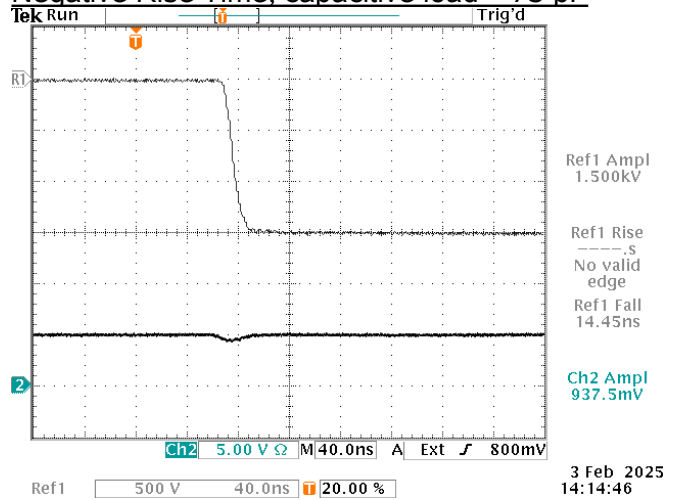


150 pF capacitor (orange) on daughterboard

### Negative Rise Time, capacitive load = 0 pF

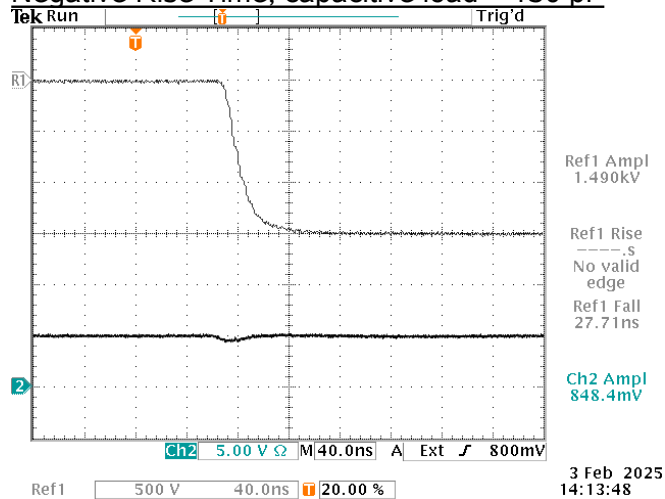


### Negative Rise Time, capacitive load = 75 pF

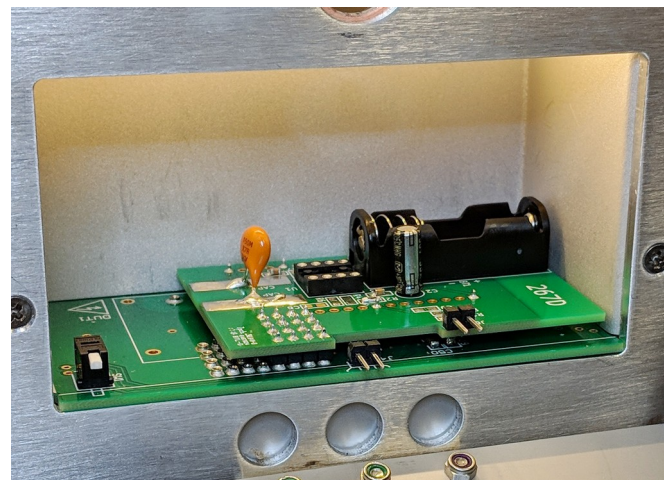
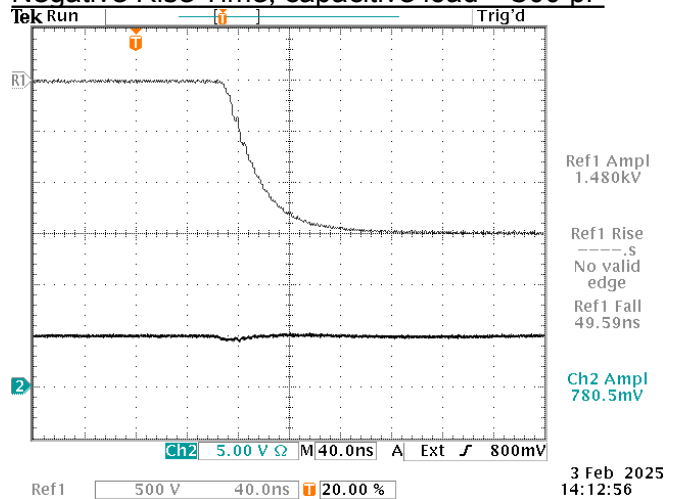


Top = HV out (stored - with signal disconnected before recording logic waveform)  
 Bottom = Logic "A" out, VCC2 = +5V, using P6246 probe, and no DUT, R2 = 1 kΩ

### Negative Rise Time, capacitive load = 150 pF

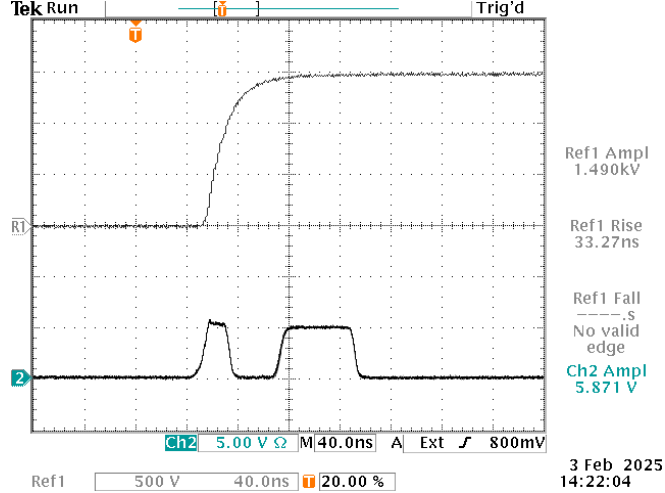


### Negative Rise Time, capacitive load = 300 pF

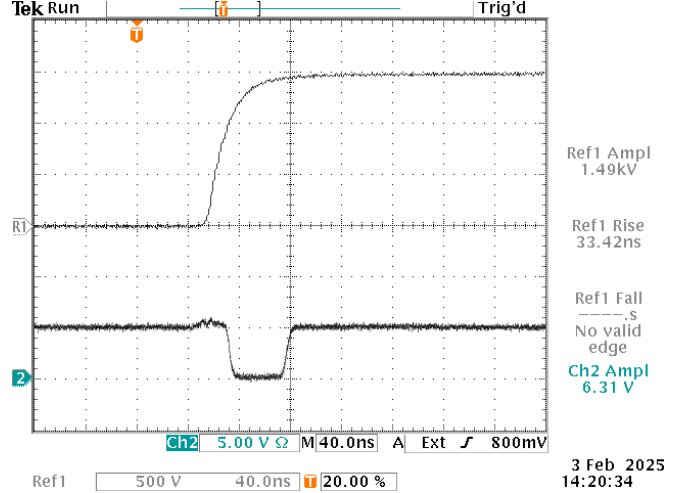


Daughterboard installed in negative position (with no DUT IC)

HCPL-7721, 0V input, +1.5 kV, 150 pF added

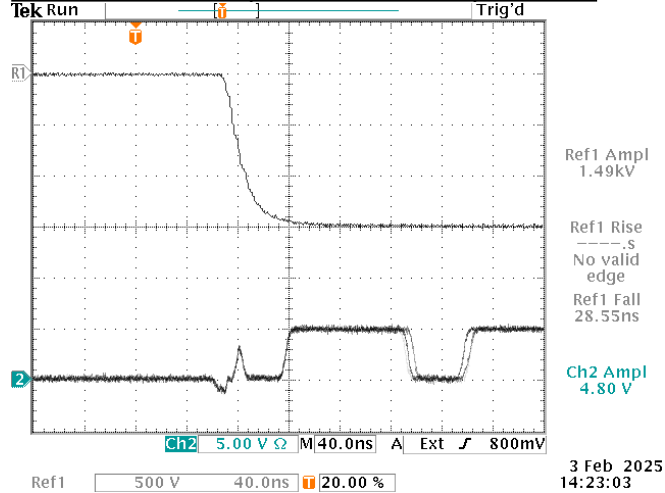


HCPL-7721, 5V input, +1.5 kV, 150 pF added

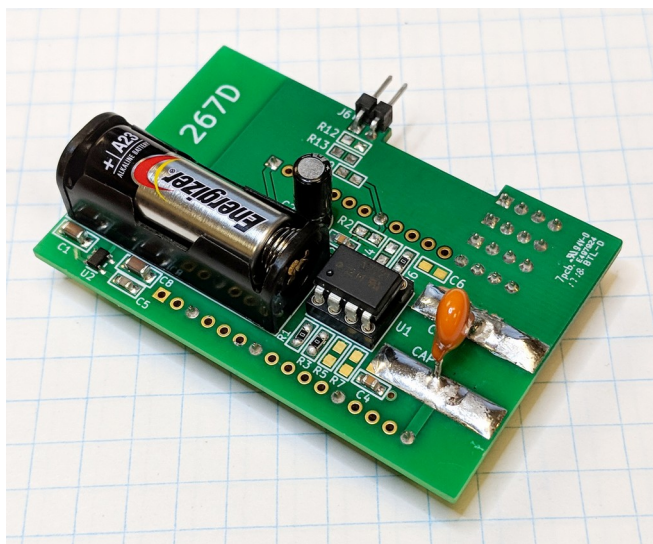
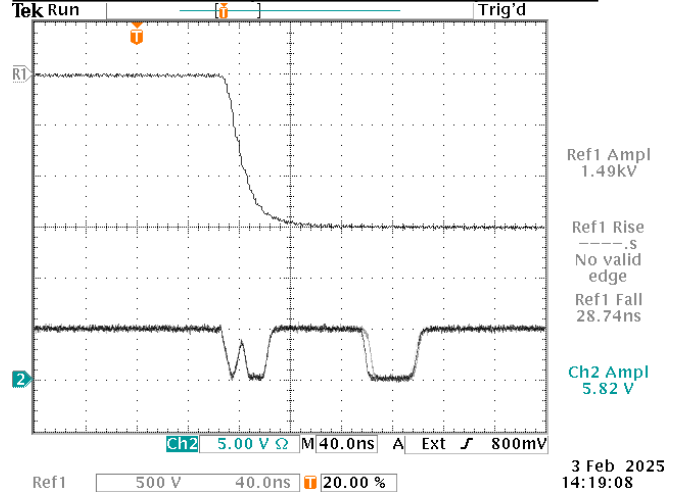


Top = high voltage pulse (stored - with signal disconnected before recording logic waveform).  
 Bot = Logic "A" out (with 0V input) using P6246.

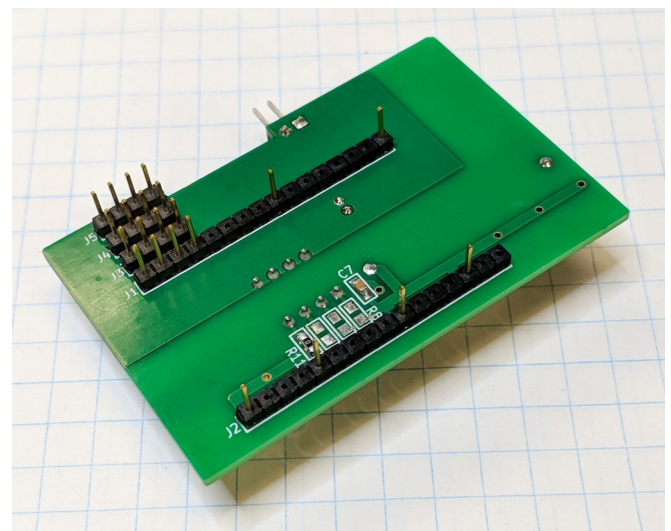
HCPL-7721, 0V input, -1.5 kV, 150 pF added



HCPL-7721, 5V input, -1.5 kV, 150 pF added



Top side of daughterboard with HCPL-7721 configured for 5V bias.



Bottom side of daughterboard with HCPL-7721 configured for 5V bias.