



**AVTECH ELECTROSYSTEMS LTD.**

NANOSECOND WAVEFORM ELECTRONICS  
SINCE 1975

P.O. BOX 265  
OGDENSBURG, NY  
U.S.A. 13669-0265  
TEL: (315) 472-5270  
FAX: (613) 226-2802

TEL: 1-800-265-6681  
FAX: 1-800-561-1970

e-mail: [info@avtechpulse.com](mailto:info@avtechpulse.com)  
<http://www.avtechpulse.com>

P.O. BOX 5120 STN. F  
OTTAWA, ONTARIO  
CANADA K2C 3H4  
TEL: (613) 226-5772  
FAX: (613) 226-2802

**INSTRUCTIONS**

**MODEL AV-108B-2-C-P-OPWRA-OP1B**

**0 to 200 AMP, 0 to +50 V, 20  $\mu$ s RISE TIME  
LASER DIODE DRIVER  
WITH IEEE 488.2 AND RS-232 CONTROL**

**SERIAL NUMBER: \_\_\_\_\_**

### WARRANTY

Avtech Electrosystems Ltd. warrants products of its manufacture to be free from defects in material and workmanship under conditions of normal use. If, within one year after delivery to the original owner, and after prepaid return by the original owner, this Avtech product is found to be defective, Avtech shall at its option repair or replace said defective item. This warranty does not apply to units which have been disassembled, modified or subjected to conditions exceeding the applicable specifications or ratings. This warranty is the extent of the obligation assumed by Avtech with respect to this product and no other warranty or guarantee is either expressed or implied.

### TECHNICAL SUPPORT

Phone: 613-226-5772 or 1-800-265-6681

Fax: 613-226-2802 or 1-800-561-1970

E-mail: [info@avtechpulse.com](mailto:info@avtechpulse.com)

World Wide Web: <http://www.avtechpulse.com>

TABLE OF CONTENTS

<b>WARRANTY</b>	<b>2</b>
<b>TECHNICAL SUPPORT</b>	<b>2</b>
<b>TABLE OF CONTENTS</b>	<b>3</b>
<b>INTRODUCTION</b>	<b>4</b>
<b>SPECIFICATIONS</b>	<b>6</b>
<b>INSTALLATION</b>	<b>7</b>
<b>VISUAL CHECK</b>	<b>7</b>
<b>PLUGGING IN THE INSTRUMENT</b>	<b>7</b>
<b>MAINFRAME FRONT PANEL CONTROLS</b>	<b>8</b>
<b>MAINFRAME REAR PANEL CONTROLS</b>	<b>10</b>
<b>OUTPUT MODULE CONTROLS</b>	<b>11</b>
<b>GENERAL INFORMATION</b>	<b>12</b>
<b>BASIC TEST ARRANGEMENT</b>	<b>12</b>
<b>BASIC PULSE CONTROL</b>	<b>13</b>
<b>MONITOR CIRCUIT</b>	<b>13</b>
<b>TRIGGER MODES</b>	<b>14</b>
<b>PULSE WIDTH MODES</b>	<b>14</b>
<b>GATING MODES</b>	<b>14</b>
<b>LENZ'S LAW AND INDUCTIVE VOLTAGE SPIKES</b>	<b>15</b>
<b>PROTECTION AGAINST INCORRECT USAGE</b>	<b>15</b>
<b>WATER COOLING</b>	<b>15</b>
<b>TOP COVER REMOVAL</b>	<b>16</b>
<b>RACK MOUNTING</b>	<b>16</b>
<b>START-UP CHECK-LIST FOR LOCAL CONTROL</b>	<b>17</b>
<b>PROGRAMMING YOUR PULSE GENERATOR</b>	<b>19</b>
<b>KEY PROGRAMMING COMMANDS</b>	<b>19</b>
<b>ALL PROGRAMMING COMMANDS</b>	<b>19</b>
<b>PERFORMANCE CHECK SHEET</b>	<b>21</b>

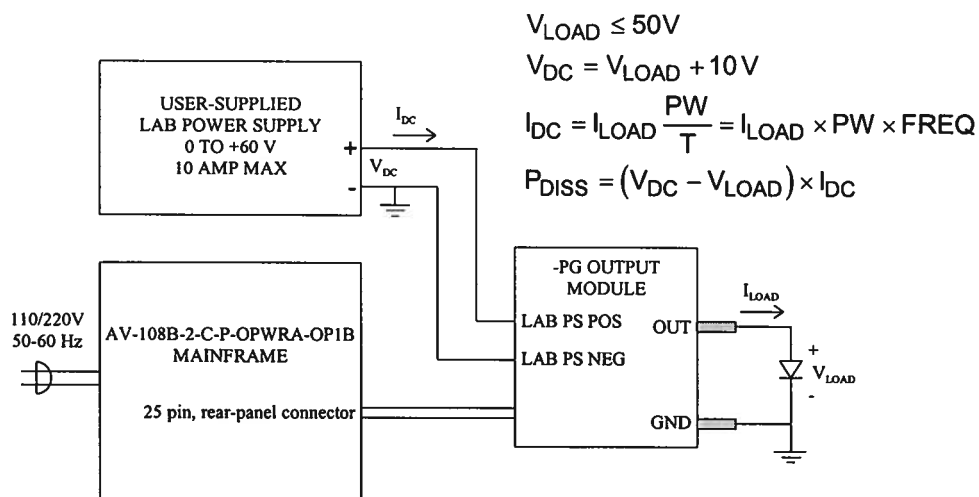
## INTRODUCTION

The Model AV-108B-2-C-P-OPWRA-OP1B pulse generator is designed for pulsing laser diode and other low impedance loads with rectangular pulses as high as 200 Amperes into load voltages up to 50V, with 20  $\mu$ s rise and fall times. The pulse repetition frequency can vary from 0.1 to 250 Hz, and pulse widths can vary from 0.2 to 2 ms. The maximum duty cycle is 5%.

The Model AV-108B-2-C-P-OPWRA-OP1B pulse generator is a current pulser. The current amplitude is largely independent of the load voltage. The load voltage must not exceed 50V.

The AV-108B-2-C-P-OPWRA-OP1B system consists of an instrument mainframe, an output module (the AV-108B-2-C-P-OPWRA-PG) which connects to the mainframe via a 4 foot long detachable cable and a user-supplied high-current DC lab power supply.\* The load is connected to two banana connectors.

The output amplitude is controlled by the AV-108B-2-C-P-OPWRA-OP1B, but the user-supplied high current DC lab power supply provides the prime power to the output module (see diagram below). This external power supply must be set to  $V_{LOAD} + 10V$  for proper operation, and it must be capable of supplying the average value (i.e.  $I_{DC}$ ) of the peak current supplied to the load ( $I_{LOAD}$ ).  $I_{DC}$ ,  $I_{LOAD}$ , pulse width (PW) and pulse period (T) are related as shown in the diagram. See the "Basic Test Arrangement" section for further details.



The AV-108B-2-C-P-OPWRA-OP1B includes provision for water-cooling, which should be used when the power dissipated in the output module ( $P_{DISS}$ ) exceeds 30 Watts.

Protective circuits monitor the lab power supply voltage level and the output module temperature and will automatically disable the triggering of the output stage if either the applied voltage or temperature exceed rated values (+60V, +50°C).

A rear-panel BNC monitor output is available which provides an attenuated coincident replica of the main output current pulse. The front-panel display also shows the measured current amplitude (in 1 Amp increments), with an accuracy of  $\pm 2\% \pm 1A$ .

\* **CAUTION:** The serial numbers on the output module and on the mainframe must be the same. If the numbers are different, call the factory before proceeding further.

## OUTPUT MODULE CONTROLS

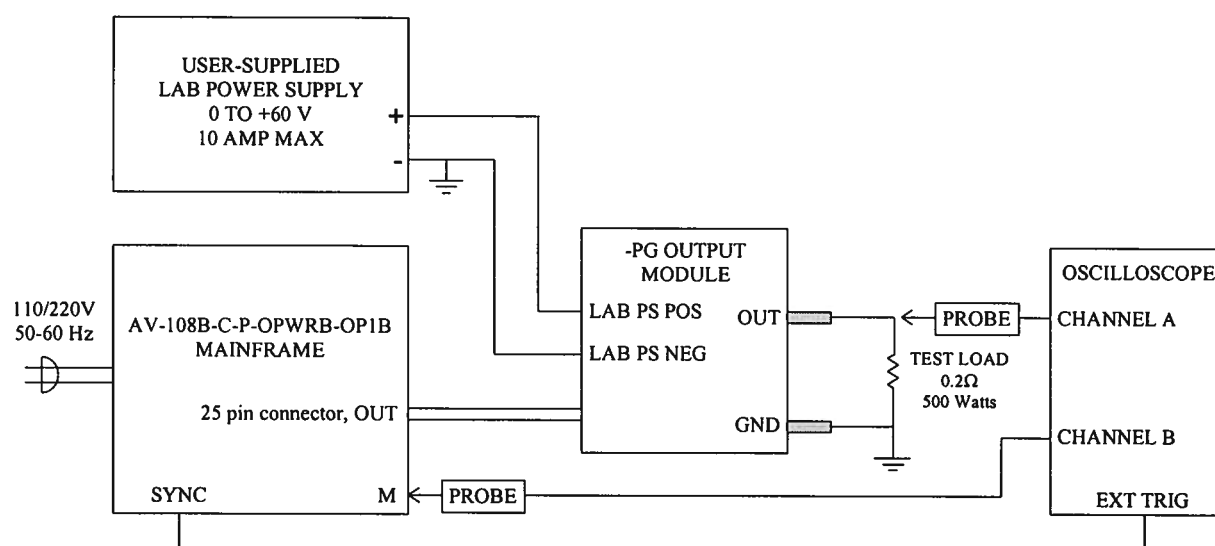
Several ten-turn trimpots are accessible on the -PG module.

1. P1, Amplitude Scale Control. Rotating this trimpot counter-clockwise will reduce the output current amplitudes proportionally, relative to the set amplitude. For instance, if the output current amplitudes are always 5% too high compared to the front-panel settings, this control can be used to bring the measured and set amplitudes into agreement.
2. P4, Amplitude Limit Control. This control sets the maximum allowed current amplitude. Rotating P4 counter-clockwise will cause the output amplitude to abruptly limit at less than 200A.
3. P2, Untriggered Quiescent Current Control. P2 is for factory-adjustment of the quiescent current level between trigger pulses (i.e. the current offset when not triggered.) This level is set to zero at the time of shipping and should not require further adjusting.
4. P5, Triggered Quiescent Current Control. P5 is for factory-adjustment of the base current level during output pulses (i.e. the current offset observed when triggered, and amplitude is set to zero). This level is set to zero at the time of shipping and should not require further adjusting.

**CAUTION:** The P2 and P5 controls are for factory adjustment only. The warranty may become invalid if these two controls are adjusted.

## GENERAL INFORMATION

### BASIC TEST ARRANGEMENT



The equipment should be connected in the general fashion shown above.

**CAUTION:** The serial numbers on the PG output module and the mainframe must be the same. If the numbers are different, call the factory before proceeding further.

The output module should always be connected to the mainframe BEFORE power is applied. The current monitor will not work properly otherwise.

The user supplied lab power supply attaches to the -PG output module via the red and black SUPERCON connectors which are supplied. The positive terminal of the power supply is to be connected to the RED SUPERCON connector on the -PG module. The negative terminal on the lab power supply is to be connected to ground and to the BLACK SUPERCON connector on the -PG module.

The output terminals of the pulse generator module are standard banana connectors.

It is essential that the resistive test load be low-inductance. (Wirewound resistors are not acceptable.) The power dissipated in the resistor is given by

$$P = I^2 \times R \times \frac{PW}{T},$$

where "I" is the current, "R" is the resistance, "PW" is the pulse width, and "T" is the pulse period (1/frequency).

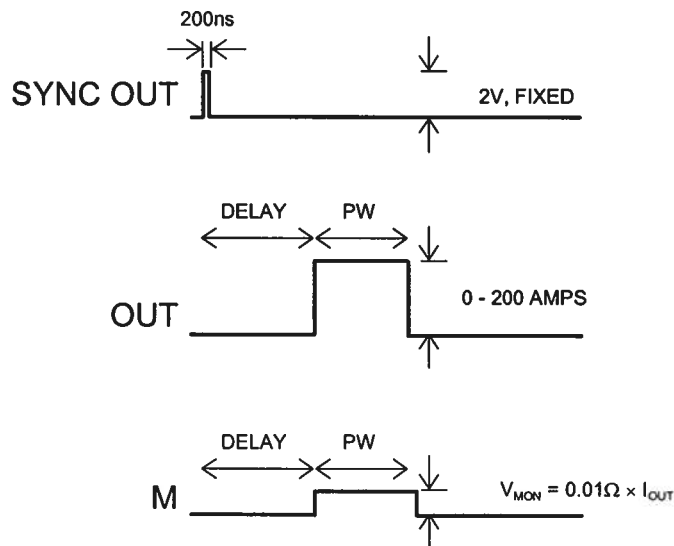
The AV-108B-2-C-P-OPWRA-OP1B includes provision for water-cooling, which should be used when the power dissipated in the output module ( $P_{DISS}$ ) exceeds 30 Watts.  $P_{DISS}$  can be calculated using:  $P_{DISS} = (V_{DC} - V_{LOAD}) \times I_{DC}$ .

## BASIC PULSE CONTROL

This instrument can be triggered by its own internal clock or by an external TTL trigger signal. In either case, three output channels respond to the trigger: OUT, SYNC, and M. The OUT channel is the signal that is applied to the device under test. Its amplitude and pulse width are variable. The SYNC pulse is a fixed-width TTL-level reference pulse used to trigger oscilloscopes or other measurement systems. When the delay is set to a positive value the SYNC pulse precedes the OUT pulse. The M (Monitor) output is a voltage waveform that is proportional to the current waveform on OUT.

$$V_{\text{MON}} = 0.01\Omega \times I_{\text{OUT}}, \text{ for a monitor load of } > 1 \text{ k}\Omega.$$

These pulses are illustrated below:



*Basic Output Pulses*

The delay, pulse width, and frequency (when in the internal mode), of the OUT pulse can be varied with front panel controls or via the GPIB or RS-232 computer interfaces.

## MONITOR CIRCUIT

As noted in the previous section, a current monitor output is available. The current monitor output also measures the amplitude of the most recent pulse, in amperes, and displays it (in 1 Amp increments) on the front panel LCD, with an accuracy of  $\pm 2\% \pm 1\text{A}$ . The value can also be read via the computer interface.

The output module should always be connected to the mainframe BEFORE power is applied. The current monitor will not work properly otherwise.



## TRIGGER MODES

This instrument has four trigger modes:

- Internal Trigger: the instrument controls the trigger frequency, and generates the clock internally.
- External Trigger: the instrument is triggered by an external TTL-level clock on the back-panel TRIG connector.
- Manual Trigger: the instrument is triggered by the front-panel "SINGLE PULSE" pushbutton.
- Hold Trigger: the instrument is set to not trigger at all.

These modes can be selected using the front panel trigger menu, or by using the appropriate programming commands. (See the "OP1B Interface Programming Manual" for more details.)

## PULSE WIDTH MODES

This instrument has two pulse width modes:

- Normal: the instrument controls the output pulse width.
- $PW_{IN}=PW_{OUT}$ : the output pulse width equals the pulse width of the trigger signal on the "TRIG" connector. The instrument must be in the external trigger mode.

These modes can be selected using the front panel pulse width menu, or by using the appropriate programming commands. (See the "OP1B Interface Programming Manual" for more details.)

## GATING MODES

Triggering can be suppressed by a TTL-level signal on the rear-panel GATE connector. The instrument can be set to stop triggering when this input high or low, using the front-panel gate menu or the appropriate programming commands. This input can also be set to act synchronously or asynchronously. When set to asynchronous mode, the GATE will disable the output immediately. Output pulses may be truncated. When set to synchronous mode, the output will complete the full pulse width if the output is high, and then stop triggering. No pulses are truncated in this mode.

## LENZ'S LAW AND INDUCTIVE VOLTAGE SPIKES

This instrument is designed to pulse resistive and diode loads and will exhibit a large output spike when used to drive a load with significant inductance (LENZ'S LAW). For this reason the load should be connected to the output using low inductance leads (as short as possible and as heavy a gauge as possible).

The voltage developed across an inductance  $L$  (in Henries), when the current is changing at a rate given by  $di_{LOAD}/dt$  (in Amps/sec), is:  $V_{SPIKE} = L \frac{di_{LOAD}}{dt}$ .

## PROTECTION AGAINST INCORRECT USAGE

To avoid damaging the instrument, observe these rules:

- Never let the lab power supply voltage exceed 60V
- Never let the duty cycle exceed 5%
- Never let the peak output current exceed 200A
- Never let the average output current exceed 10A
- Set the DC power supply at  $V_{LOAD} + 10V$ . Higher voltages will cause extra heating.
- Use water-cooling when  $P_{DISS} = (V_{DC} - V_{LOAD}) \times I_{DC} > 30$  Watts

This pulse generator incorporates several features to protect against improper use. An protective circuit controls the front panel overload light and an internal buzzer. This indicator will light and the buzzer will sound if:

- The instrument becomes excessively hot
- The applied DC voltage exceeds 60V
- The applied DC voltage is negative

In these situations, triggering will be disabled.

The overload light may illuminate briefly when the AC power is first applied. If this indicator lights at any other time, the instrument should be turned off until the cause of the overload has been identified and corrected.

## WATER COOLING

The output module has provision for water cooling. (Thread size is 1/4" NPT.) This cooling is necessary when the power dissipated in the output module ( $P_{DISS}$ ) exceeds 30 Watts.  $P_{DISS}$  can be calculated using:  $P_{DISS} = (V_{DC} - V_{LOAD}) \times I_{DC}$ . The water requirement is approximately 5 litres/minute. If water cooling is not used, or if the water supply fails, the instrument will heat up until the automatic temperature-protection circuitry trips and disables the output until it has cooled.

### TOP COVER REMOVAL

The top cover of the instrument may be removed by removing the four Phillips screws on the top panel. With these four screws removed, the top panel may be slid off by pulling it towards the rear.

### RACK MOUNTING

A rack mounting kit is available. The -R5 rack mount kit may be installed after first removing the one Phillips screw on the side panel adjacent to the front handle.

### START-UP CHECK-LIST FOR LOCAL CONTROL

- 1) The instruction manual has been studied thoroughly.
- 2) The "Local Control" section of the "OP1B Interface Programming Manual" has been studied thoroughly.
- 3) The -PG module is connected to the mainframe as shown in the "Basic Test Arrangement" section. (The output module should always be connected to the mainframe BEFORE power is applied. The current monitor will not work properly otherwise.)
- 4) If the power dissipated in the output module,  $P_{DISS} = (V_{DC} - V_{LOAD}) \times I_{DC}$ , will exceed 30 W, the water-cooling provisions of the output module should be used. (Thread size is 1/4" NPT.) A flow rate of 5 litres/minutes should be sufficient to cool the module.
- 5) The load is connected to the output module. If the load is a diode, the anode of the load is connected to the OUT terminal. For initial testing, it is recommended that a resistive load be used. Factory tests are conducted using a low-inductance 0.2 Ohm, 500 Watt resistive load.
- 6) The user-supplied lab power supply is connected with the positive terminal connected to the red SUPERCON on the PG module and the negative terminal connected to the black SUPERCON. The negative terminal is grounded. The power supply potential is set to zero.
- 7) Turn on the prime power to the mainframe. The LCD will briefly display the message, "Nulling Current Monitor ....", and the main menu will appear.
- 8) The arrow pointer should be pointing at the frequency menu item. If it is not, press the MOVE button until it is.
- 9) Press the CHANGE button. The frequency submenu will appear. Rotate the ADJUST knob until the frequency is set at the desired setting. The arrow pointer should be pointing at the "Internal" choice. If it is not, press MOVE until it is.
- 10) Press CHANGE to return to the main menu.
- 11) Press the MOVE button to move the arrow pointer to the pulse width menu item. Press CHANGE to bring up the pulse width submenu, and rotate the ADJUST knob until the pulse width is set at the desired setting. The arrow pointer should be pointing at the "Normal" choice. If it is not, press MOVE until it is. Press CHANGE to return to the main menu.
- 12) Connect the rear panel M output to the scope (1 VOLT/DIV) and connect the TRIG out to the scope time base. The scope time base should be triggering.

- 13) Connect a scope probe across the resistive test load and apply prime power to the lab power supply (after first ensuring that the output amplitude is set to zero).
- 14) Increase the lab power supply voltage to the desired value ( $V_{LOAD} + 10V$ ).
- 15) Press the MOVE button to move the arrow pointer is pointing at the output item. Press CHANGE to bring up the output submenu. The arrow pointer should be initially be pointing at the "Output Off" choice. Press MOVE so that the arrow pointer is pointing at the "Output On" choice. (The mainframe is now supplying a trigger to the output module.) Press CHANGE to return to the main menu.
- 16) Press the MOVE button to move the arrow pointer to the amplitude menu item. Press CHANGE to bring up the amplitude submenu, and rotate the ADJUST knob until the amplitude is set at the desired setting. Observe the waveforms on the scope and the DC current level on the DC power supply. A rectangular pulse should appear on the scope (for both the load voltage and monitor channels) and the amplitude should increase as the ADJUST knob is rotated. At the same time, the average current supplied by the DC supply will increase.

The current monitor reading on the front panel LCD is accurate to within  $\pm 2\% \pm 1A$ , and shows the current in 1 Amp increments. The current amplitude setting is accurate to within 5% ( $\pm 2A$ ) typically.

- 17) Observe the pulse width and pulse period on the scope and confirm that the duty cycle does not exceed 5% and that the peak current does not exceed 200 Amps (i.e. 2 Volts out from the monitor output).
- 18) Observe the DC current supplied by the DC supply and ensure that the average current does not exceed 10 Amperes.
- 19) If additional assistance is required:

Tel: (613) 226-5772, Fax: (613) 226-2802  
Email: [info@avtechpulse.com](mailto:info@avtechpulse.com)

## PROGRAMMING YOUR PULSE GENERATOR

### KEY PROGRAMMING COMMANDS

The "OP1B Interface Programming Manual" describes in detail how to connect the pulse generator to your computer, and the programming commands themselves. A large number of commands are available; however, normally you will only need a few of these. Here is a basic sample sequence of commands that might be sent to the instrument after power-up:

```
*rst                (resets the instrument)
trigger:source internal (selects internal triggering)
frequency 10 Hz      (sets the frequency to 10 Hz)
pulse:width 200 us   (sets the pulse width to 200 us)
pulse:delay 30 us    (sets the delay to 30 us)
output on            (turns on the output)
source:current 50 A   (sets the current amplitude to 50 amperes)
measure:amplitude?   (this returns the current amplitude, in amperes,
                    as measured by the monitor circuit)
```

These commands will satisfy 90% of your programming needs.

### ALL PROGRAMMING COMMANDS

For more advanced programmers, a complete list of the available commands is given below. These commands are described in detail in the "OP1B Interface Programming Manual". (Note: this manual also includes some commands that are not implemented in this instrument. They can be ignored.)

<u>Keyword</u>	<u>Parameter</u>	<u>Notes</u>
LOCAL		
MEASure:		
:AMPLitude?		[query only]
OUTPut:		
:[STATe]	<boolean value>	
:PROTection		
:TRIPped?		[query only]
REMOTE		
[SOURce]:		
:FREQuency		
:[CW   FIXed]	<numeric value>	
[SOURce]:		
:CURRent		
:[LEVel]		
:[IMMediate]		
:[:AMPLitude]	<numeric value>   EXTernal	
:PROTection		
:TRIPped?		[query only]
[SOURce]:		
:PULSe		
:PERiod	<numeric value>	

:WIDTh	<numeric value>	
:DCYClE	<numeric value>	
:HOLD	WIDTh   DCYClE	
:DELay	<numeric value>	
:GATE		
:TYPE	ASYNc   SYNc	
:LEVel	High   Low	
STATUS:		
:OPERation		
:[EVENt]?		[query only, always returns "0"]
:CONDition?		[query only, always returns "0"]
:ENABle	<numeric value>	[implemented but not useful]
:QUESTionable		
:[EVENt]?		[query only, always returns "0"]
:CONDition?		[query only, always returns "0"]
:ENABle	<numeric value>	[implemented but not useful]
SYSTEM:		
:COMMunicate		
:GPIB		
:ADDRess	<numeric value>	
:SERial		
:CONTRol		
:RTS	ON   IBFull   RFR	
:[RECeive]		
:BAUD	1200   2400   4800   9600	
:BITS	7   8	
:ECHO	<boolean value>	
:PARity		
:[TYPE]	EVEN   ODD   NONE	
:SBITS	1   2	
:ERRor		
:[NEXT]?		[query only]
:COUNT?		[query only]
:VERSion?		[query only]
TRIGger:		
:SOURce	INTernal   EXTernal   MANual   HOLD   IMMEDIATE	
*CLS		[no query form]
*ESE	<numeric value>	
*ESR?		[query only]
*IDN?		[query only]
*OPC		
*SAV	0   1   2   3	[no query form]
*RCL	0   1   2   3	[no query form]
*RST		[no query form]
*SRE	<numeric value>	
*STB?		[query only]
*TST?		[query only]
*WAI		[no query form]

PERFORMANCE CHECK SHEET



February 26/98

Michael did this set in ward