

**AVTECH****AVTECH ELECTROSYSTEMS LTD.**NANOSECOND WAVEFORM ELECTRONICS  
SINCE 1975

P.O. BOX 265  
OGDENSBURG, NY  
U.S.A. 13669-0265  
TEL: (315) 472-5270  
FAX: (613) 226-2802

TEL: 1-800-265-6681  
FAX: 1-800-561-1970

e-mail: [info@avtechpulse.com](mailto:info@avtechpulse.com)  
<http://www.avtechpulse.com/>

BOX 5120, LCD MERIVALE  
OTTAWA, ONTARIO  
CANADA K2C 3H4  
TEL: (613) 226-5772  
FAX: (613) 226-2802

## INSTRUCTIONS

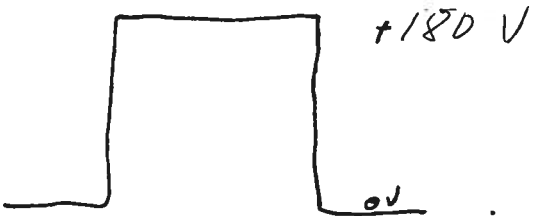
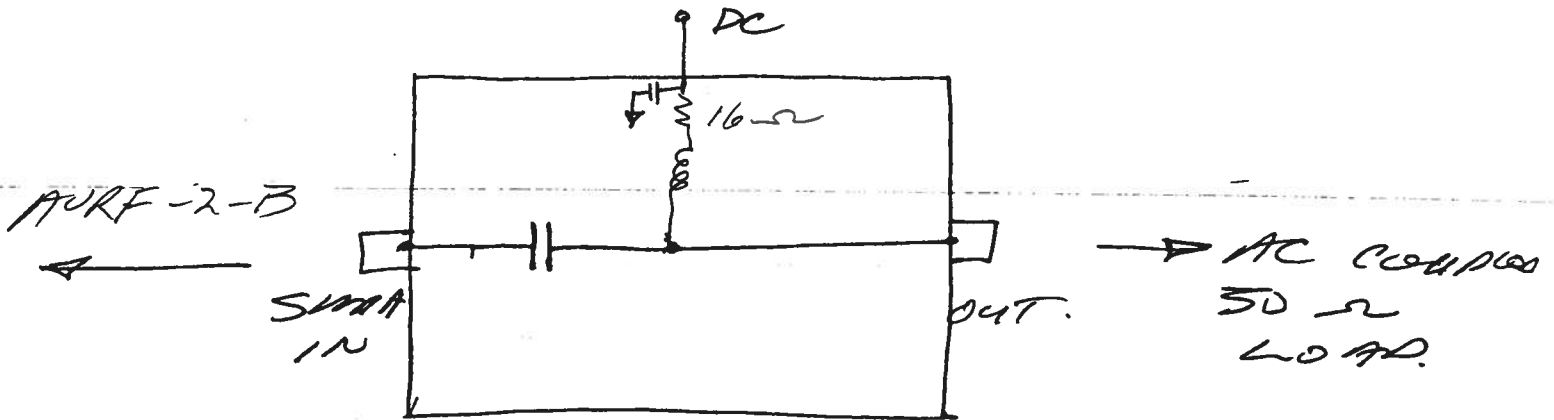
### MODEL AVX-TD-MSA

- 1) The functional equivalent circuit for Model AVX-TD-MSA is shown on the attached.
- 2) Note that the pulse width must not exceed 5 us.
- 3) The DC voltage must not exceed 100 Volts.
- 4) The DC current must not exceed 10 mA.
- 5) For additional assistance:

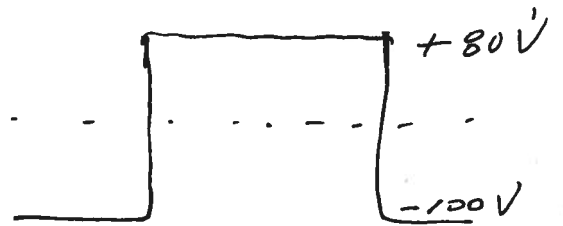
Tel: (613) 226-5772  
Fax: (613) 226-2802  
Email: [info@avtechpulse.com](mailto:info@avtechpulse.com)

# PVX-TD - M.S.A

0 TO  $\pm 100$  V ( $\pm 10$  mA MAX)



PULSE INPUT



OUTPUT FOR  
+180V PULSE AND  
-100 VDC IN.

CAUTION: LIMIT

$I_{DC}$  TO 10 mA!