

# AVTECH ELECTROSYSTEMS LTD.

NANOSECOND WAVEFORM ELECTRONICS  
ENGINEERING . MANUFACTURING

□ P.O. BOX 265  
OGDENSBURG  
NEW YORK  
13669  
(315) 472-5270

BOX 5120 STN. "F"  
OTTAWA, ONTARIO  
CANADA K2C 3H4  
(613) 226-5772  
TELEX 053-4591

## INSTRUCTIONS

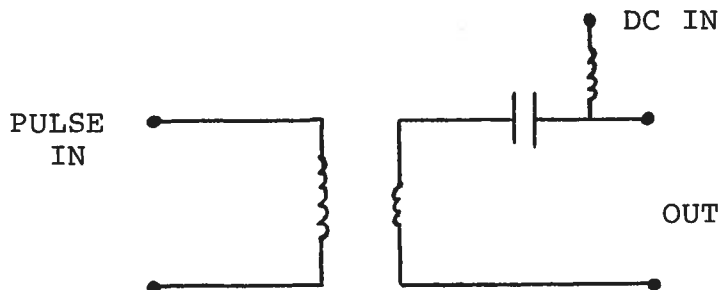
### Model AVX-M3-S-T

The AVX-M3-S transformer is designed to provide a match from 50 ohms to 12.5 ohms with a risetime of 100 psec or less with pulse widths as high as 10 nsec. The 12.5 ohm load should be soldered between the centre conductor and either ground pad of the output microstrip line.

The rise time and voltage ratio of the transformer were confirmed by connecting a 16 ohm resistive load and a 50 ohm sampling scope input line to the transformer output.

CAUTION: Use minimal heat when soldering to the transformer.

Model AVX-M3-S-T also contains a bias insertion circuit on its output with the following equivalent circuit:



The DC bias is applied to the small solder terminal adjacent to the SMA PULSE IN connector.

Max DC volts:  $\pm 50$  volts  
Max DC current: 200 mA  
Max pulse width: 10 nsec