



AVTECH ELECTROSYSTEMS LTD.

NANOSECOND WAVEFORM ELECTRONICS
SINCE 1975

P.O. BOX 265
OGDENSBURG, NY
U.S.A. 13669-0265
TEL: (315) 472-5270
FAX: (613) 226-2802

TEL: 1-800-265-6681
FAX: 1-800-561-1970
U.S.A. & CANADA

BOX 5120 STN. F
OTTAWA, ONTARIO
CANADA K2C 3H4
TEL: (613) 226-5772
FAX: (613) 226-2802

INSTRUCTIONS

MODEL AVX-S3D BIAS INSERTION UNIT

S.N.: 6889

WARRANTY

Avtech Electrosystems Ltd. warrants products of its manufacture to be free from defects in material and workmanship under conditions of normal use. If, within one year after delivery to the original owner, and after prepaid return by the original owner, this Avtech product is found to be defective, Avtech shall at its option repair or replace said defective item. This warranty does not apply to units which have been disassembled, modified or subjected to conditions exceeding the applicable specifications or ratings. This warranty is the extent of the obligation or liability assumed by Avtech with respect to this product and no other warranty or guarantee is either expressed or implied.

Fig. 1

BIAS INSERTION UNIT TEST ARRANGEMENT

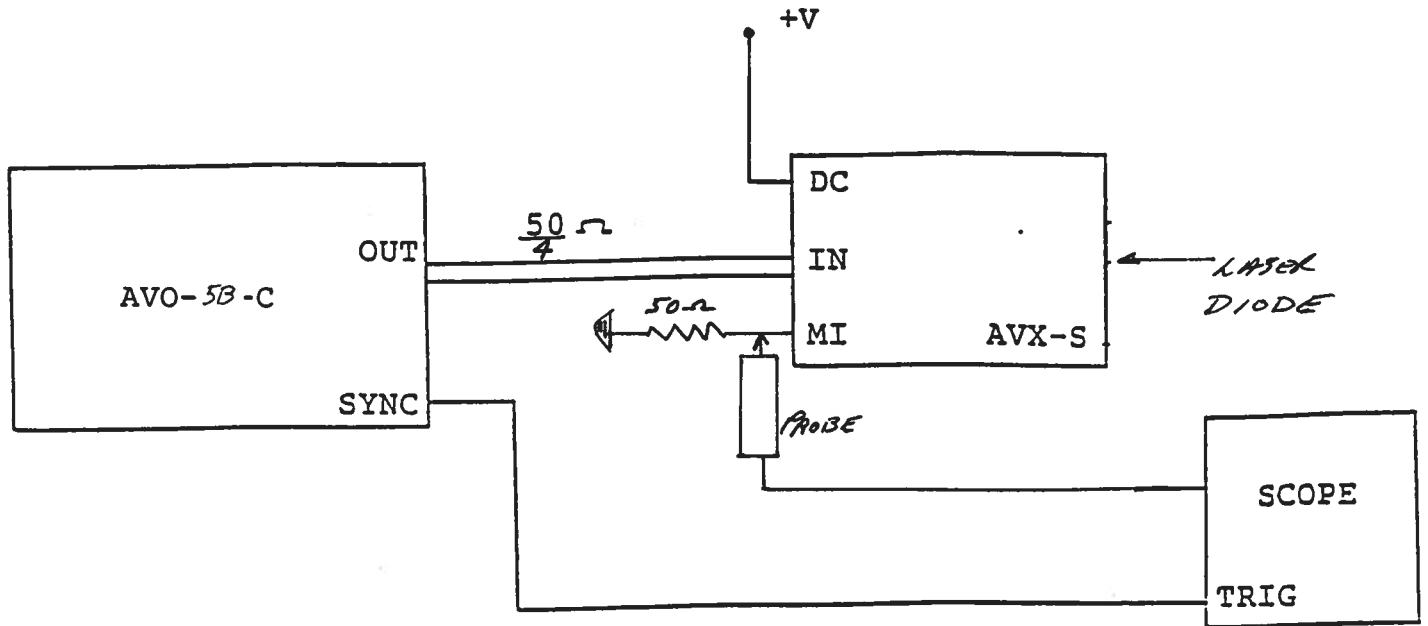
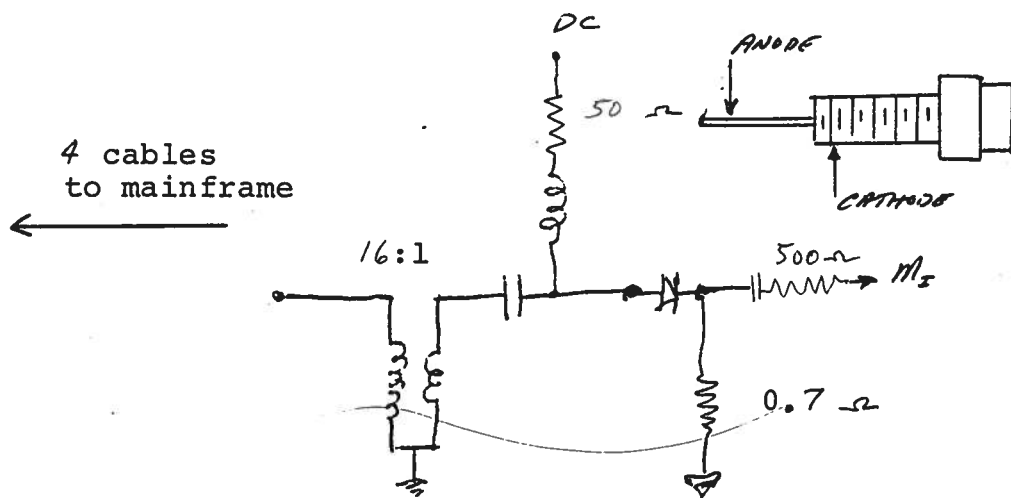


Fig. 2

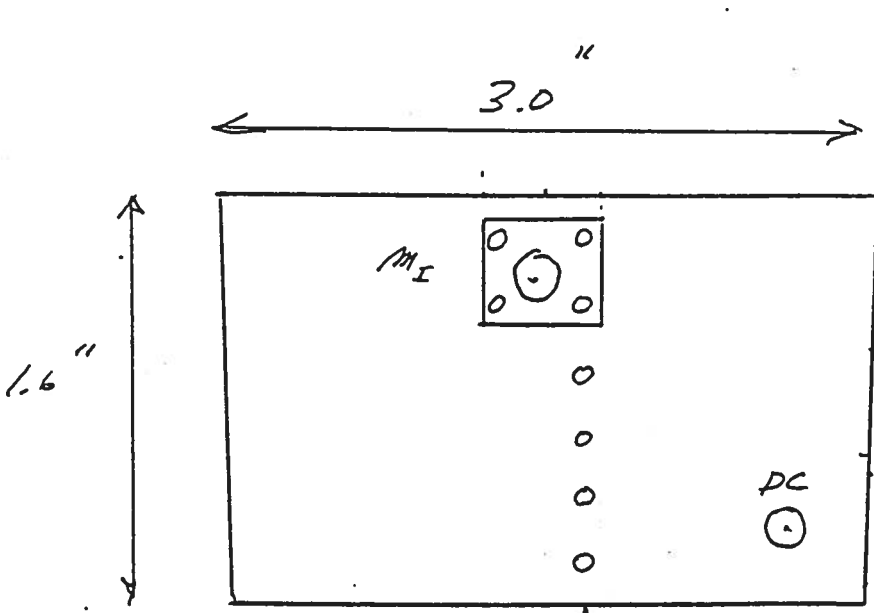
FUNCTIONAL EQUIVALENT CIRCUIT



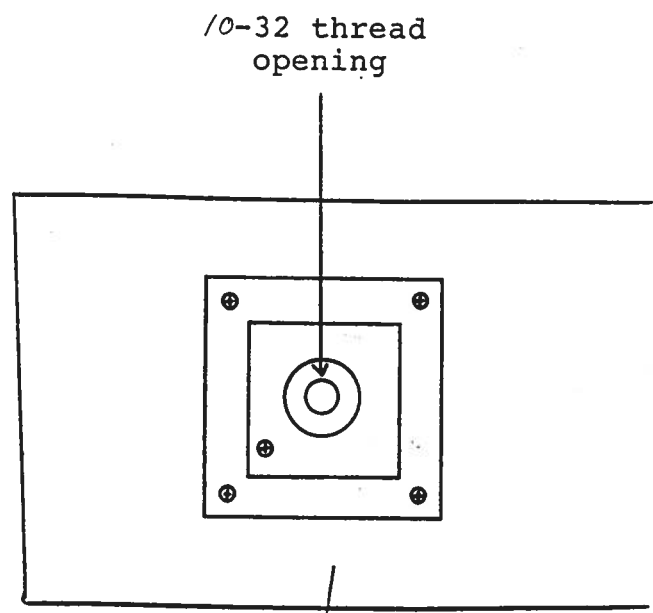
Notes:

- 1) Gently insert the anode lead of the OP-3 package into the 10-32 threaded opening of the AVX-S3D unit and contact the pin socket which is located about 1 centimeter into the 10-32 opening. Push the anode lead into the socket until the 10-32 threads on the package contact the body of the AVX-S3D unit. Then screw the package into the threads using finger force only. Note that the above operation is much easier if the anode lead is very straight.
- 2) The DC terminal of the bias insertion must either be shorted to ground (if a DC offset is not required) or a DC power supply must be applied. The laser diode will not function if the DC terminal is open circuited. Note that the DC current must not exceed ± 100 mA.
- 3) The MI port must be terminated into 50 Ohms. MI provides outputs as high as 3 Volts.
- 4) The diode current I_D (Amps) and the MI output voltage are related as follows:

$$I_D \approx 15.2 M_I$$



4 CABLES TO
AVO-5B MAINFRAME



FRESH-MOUNTED
SOCKET
ASSEMBLY

ZIPPER TAB

Dec. 22/93

- MI