

# AVTECH ELECTROSYSTEMS LTD.

NANOSECOND WAVEFORM ELECTRONICS  
ENGINEERING - MANUFACTURING

□ P.O. BOX 265  
OGDENSBURG  
NEW YORK  
13669  
(315) 472-5270

BOX 5120, STN. "F"  
OTTAWA, ONTARIO  
CANADA K2C 3H4  
TEL: (613) 226-5772  
FAX: (613) 226-2802  
✕ □

August 28, 1991.

Mr. Rick Noel  
Seastar Optics  
2045 Mills Rd.  
Sidney, B.C.  
V8L 3S1

Dear Rick:

With reference to our recent discussions, I am pleased to offer a price and delivery quotation for the following special purpose bias insertion unit (to be installed by AVTECH in chassis supplied by SEASTAR):

Model designation:	AVX-T-SO2A2.
Bandwidth:	10 MHz to 1.0 GHz.
DC current rating:	500 mA max.
Internal matching resistor:	46 ohms.
RF input connector:	SMA (female).
Laser diode connector:	4 pin socket flush mounted at end of brass tube on supplied chassis. Pin connections as per enclosed drawing. 2.54 mm separation between pins 1 and 3. Diode leads insert up to 0.5 cm into sockets. For maximum performance, case of diode should contact end of brass tube. Note that AVX-T-SO2A2 will accept either the positive bias or negative bias packages. Note that socket pins 1 and 4 are internally connected.

DC input, PD cathode (ground)  
and PD anode:

Connected to 3 pins of TB5  
connector on back plate of  
housing (supplied by SEASTAR).  
AVTECH will permanently  
install this back plate.

Component supply:

AVTECH will supply all the  
internal bias unit compo-  
nents, the diode socket pins  
and the 215 SMA connector.  
SEASTAR will supply the  
chassis housing including  
the TB5 connector.

Price:

\$366.00 US each  
(in quantities of 5),  
FOB Ottawa.

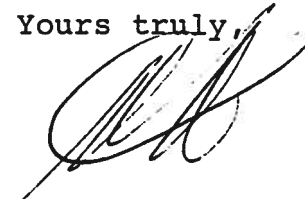
PST and GST extra if  
applicable.

Delivery:

30-45 days ARO.

Thank you for your continuing interest in our products.  
Please call me again if you require any additional information  
or changes to the above quotation.

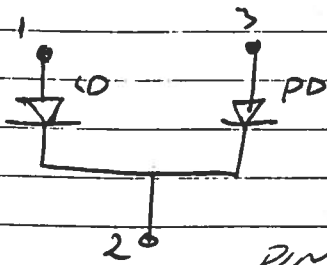
Yours truly,



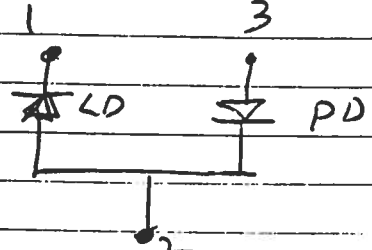
Walter J. Chudobiak  
Chief Engineer

WJC:pr  
Encl.

PACKAGE  
DIODE PIN  
CONNECTIONS

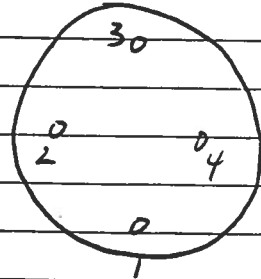
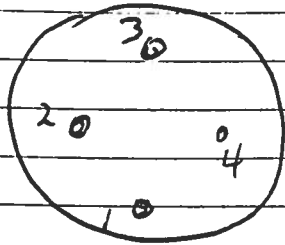


PIN 4  
NO CONNECTION

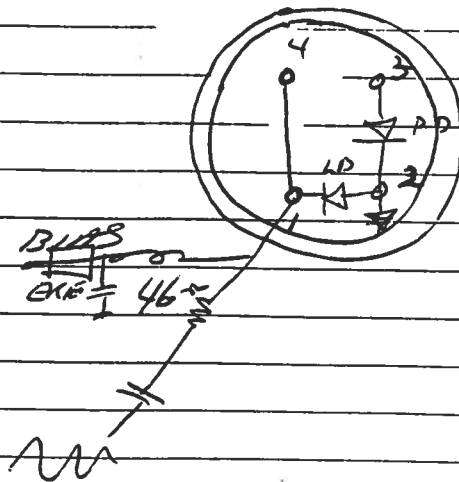
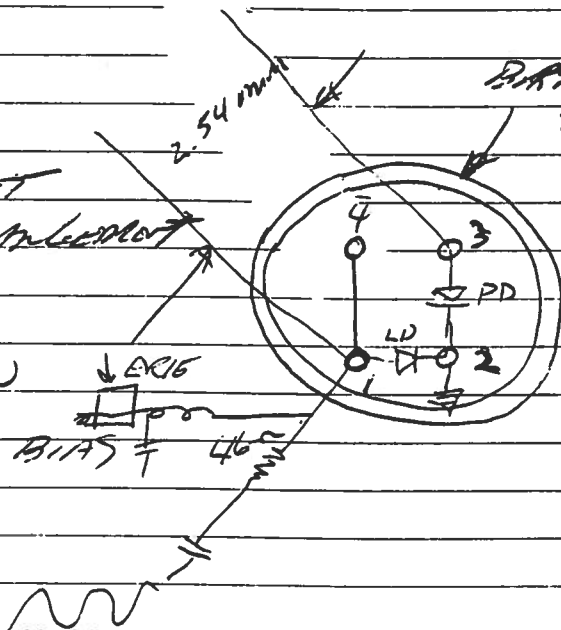


PIN 4  
NO CONNECTION

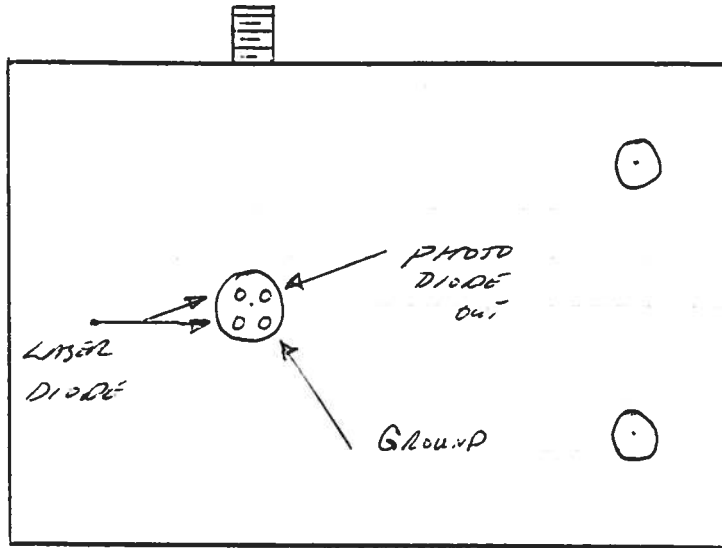
DIODE  
PACKAGE  
BOTTOM  
VIEW



SOCKET  
MOUNTING  
TOP  
VIEW



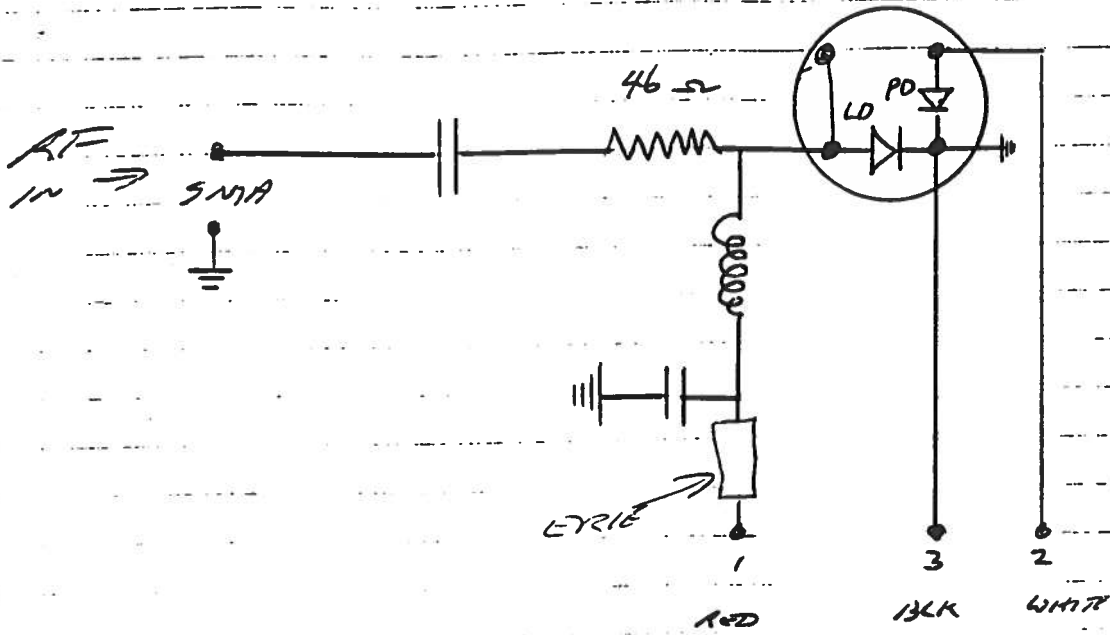
NOTE THAT SOCKET PINS  
1 AND 4 ARE  
INTERNALLY CONNECTED



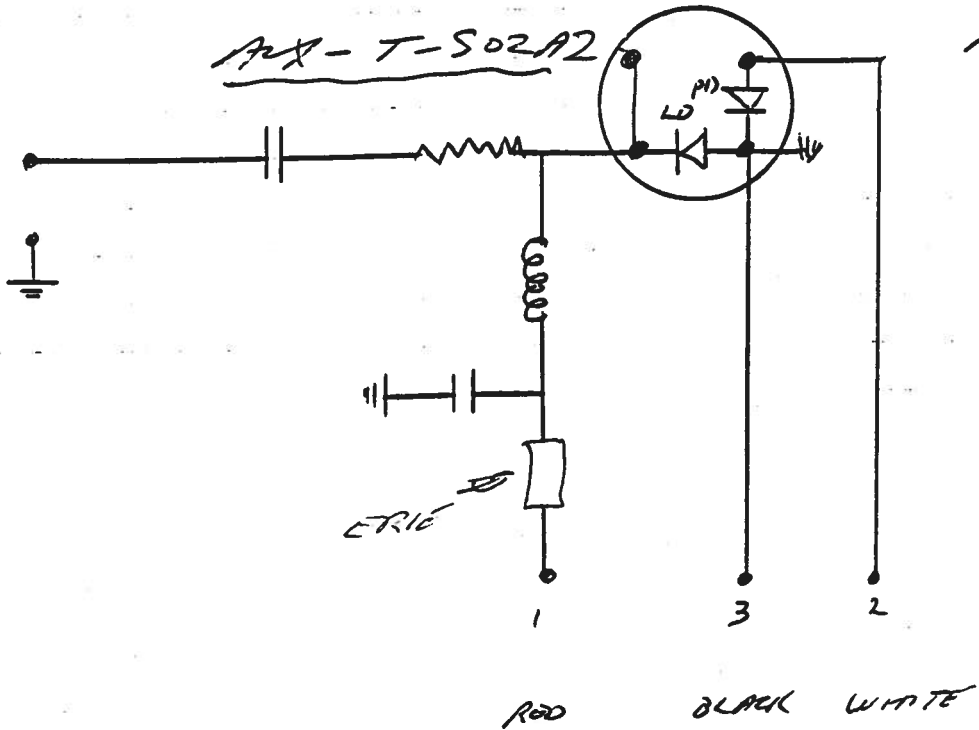
ARR - T - 502A2 PIN CONNECTIONS

1991

AX-T-502A2 (WITH POSITIVE BIAS)  
DIODE PACKING



AX-T-502A2 (WITH NEGATIVE BIAS)  
DIODE PACKING



11.26.91