

AVTECH ELECTROSYSTEMS LTD.

NANOSECOND WAVEFORM ELECTRONICS
ENGINEERING - MANUFACTURING

P.O. BOX 265
OGDENSBURG
NEW YORK
13669
(315) 472-5270

BOX 5120, STN. "F"
OTTAWA, ONTARIO
CANADA K2C 3H4
TEL: (613) 226-5772
FAX: (613) 226-2802
TELEX: 053-4591

September 25, 1990.

Mr. Grant Rogers
Seastar Optics
2045 Mills Rd.
Sidney, B.C.
V8L 3S1

Dear Grant:

With reference to our recent discussions, I am pleased to offer a price and delivery quotation for the following special purpose bias insertion unit (to be installed by AVTECH in chassis supplied by SEASTAR):

Model designation:	AVX-T-SO2A.
Bandwidth:	10 MHz to 1.0 GHz.
DC current rating:	500 mA max.
Internal matching resistor:	46 ohms.
RF input connector:	SMA (female).
Laser diode connector:	3 pin socket flush mounted at end of brass tube on supplied chassis. Pin connections as per enclosed drawing. 2.54 mm separation between pins 1 and 3. Diode leads insert up to 0.7 ^{0.5} cm into sockets. For maximum performance, case of diode should contact end of brass tube. Note that AVX-T-SO2A will accept either the positive bias or negative bias packages.

*1/24/90
TBS
144*

DC input, PD cathode (ground)
and PD anode:

Connected to 3 pins of TB5
connector on back plate of
housing (supplied by SEASTAR).
AVTECH will permanently
install this back plate.

Component supply:

AVTECH will supply all the
internal bias unit compo-
nents, the diode socket pins
and the 215 SMA connector.
SEASTAR will supply the
chassis housing including
the TB5 connector.

Chassis mods:
(relative to prototype)

The chassis wall thickness
where the SMA connector
attaches must be reduced
from 5.6 mm to approx. 2.8
mm by recessing the connector
in a 14 x 14 mm depression.
Note that the position of
the 2-56 tapped and clearance
holes must not be changed
and that the SMA connector
requires a 1/8" diameter
hole through the chassis
wall for the center pin.
We include a sample 215
SMA connector with this
letter.

Price:

\$298.00 US each
(in quantities of 10),
FOB Ottawa.

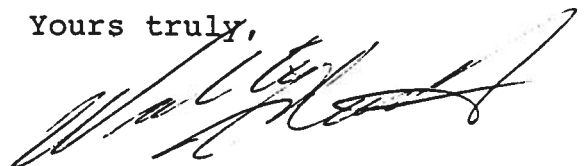
PST and FST extra if
applicable.

Delivery:

30 days ARO.

Thank you for your continuing interest in our products.
Please call me again if you require any additional information
or changes to the above quotation.

Yours truly,



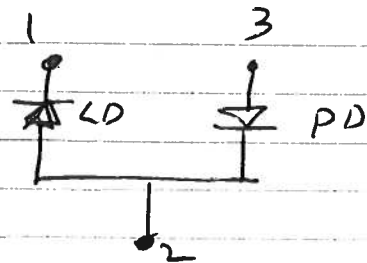
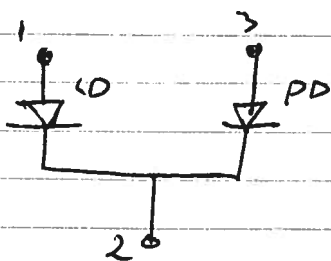
Walter J. Chudobiak
Chief Engineer

WJC:pr
Encl.

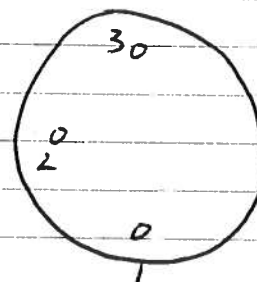
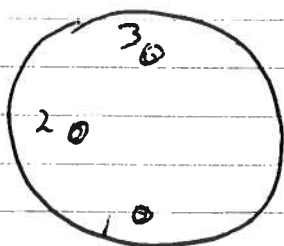
PA-T-502A

(REVISED DEC 13 90)

PACKAGE
DIODE PIN
CONNECTIONS

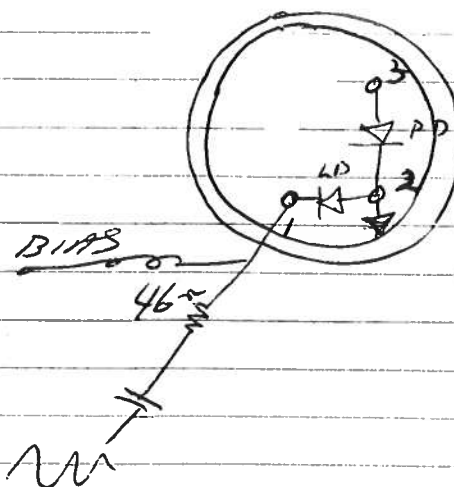
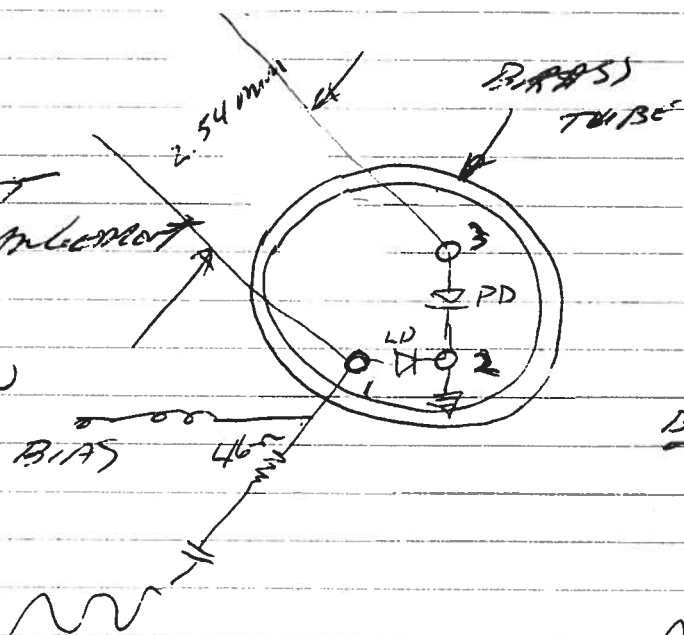


DIODE
PACKAGE
BOTTOM
VIEW



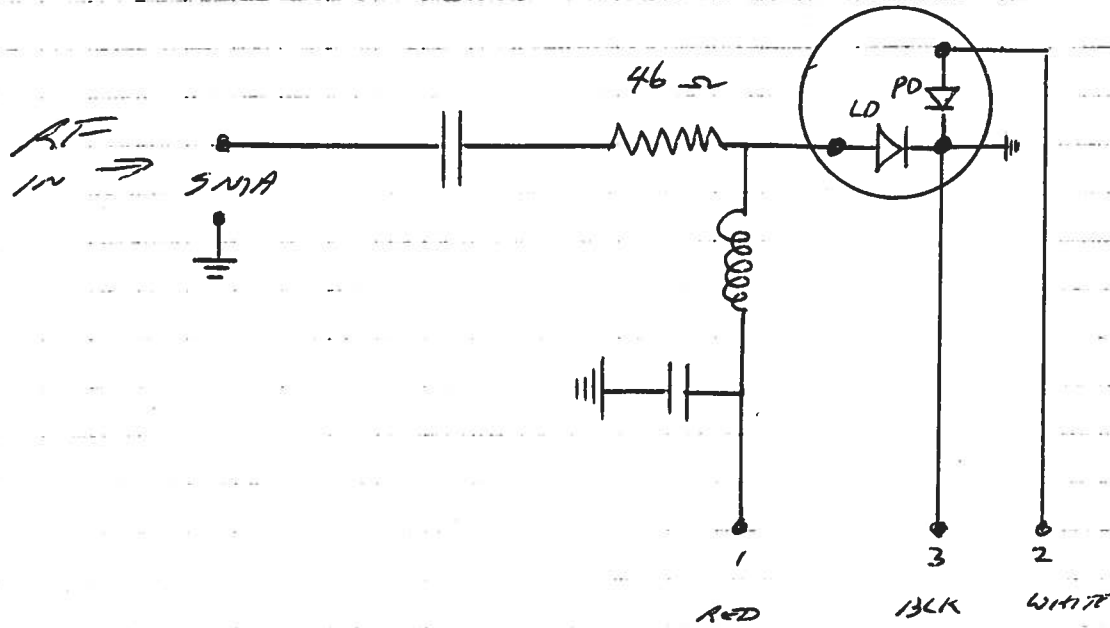
SOCKET
AT-A-MOUNT

TOP
VIEW



1991

APX-T-502A (WITH POSITIVE BIAS)
DIODE PACKING



(WITH NEGATIVE BIAS
DIODE
PACKING)

APX-T-502A

